

# **Sunbury College (8350)**

---

## **2008 School Level Report**

---

---

Please check the data in this report. If, after comparing it with your own records, you deem it to be incorrect or incomplete, follow the directions on the following website:

- <http://www.education.vic.gov.au/management/schoolimprovement/performancecd/>  
then select 'School Performance Reports'.
- 
-

# Contents

---

	<b>Page No.</b>
Privacy	3
SFO Density and LBOTE	4
Teacher Judgments against the VELs	5-13
NAPLAN - Reading	14
- Writing	15
- Numeracy	16
AIM - Reading	17
- Mathematics	18
VCE	19-23
VET	24
VCAL	25
Teacher Assessment of Student Progress (PSD students)	26-27
Enrolment	28
Student Retention - Apparent	29
- Real	30
Exit Destination	31-34
Student Absence	35
Opinion Surveys - Parent	36
- Staff	37
Performance & Development Culture	38
Staff Sick Leave	39
Teaching Staff Retention	40
Bank Balances	41

## Privacy

---

When reporting on the school's performance to the school community, care must be taken to avoid the disclosure of information that can directly or indirectly identify an individual. This may be a particular issue when reporting on the achievement of specific cohorts of students or the opinions of staff where there are small numbers.

In situations where privacy cannot be assured, schools may wish to report on the mean result or provide a written comment on school, year level or cohort performance.

Where the School Level Report is provided to school council members as part of any annual reporting process, or used for discussion on a school's performance, such as in consultation with the school community in the school self-evaluation process, it is important to remind school community members of their duty to only use this information for the purpose it was provided, and that the material must be kept confidential.

It is important to note that information that identifies an individual or can be used with other readily available information to identify a person is now protected by the *Information Privacy Act 2000* (<http://www.education.vic.gov.au/about/deptpolicies/informationprivacy.htm>).

---

# SFO Density and LBOTE

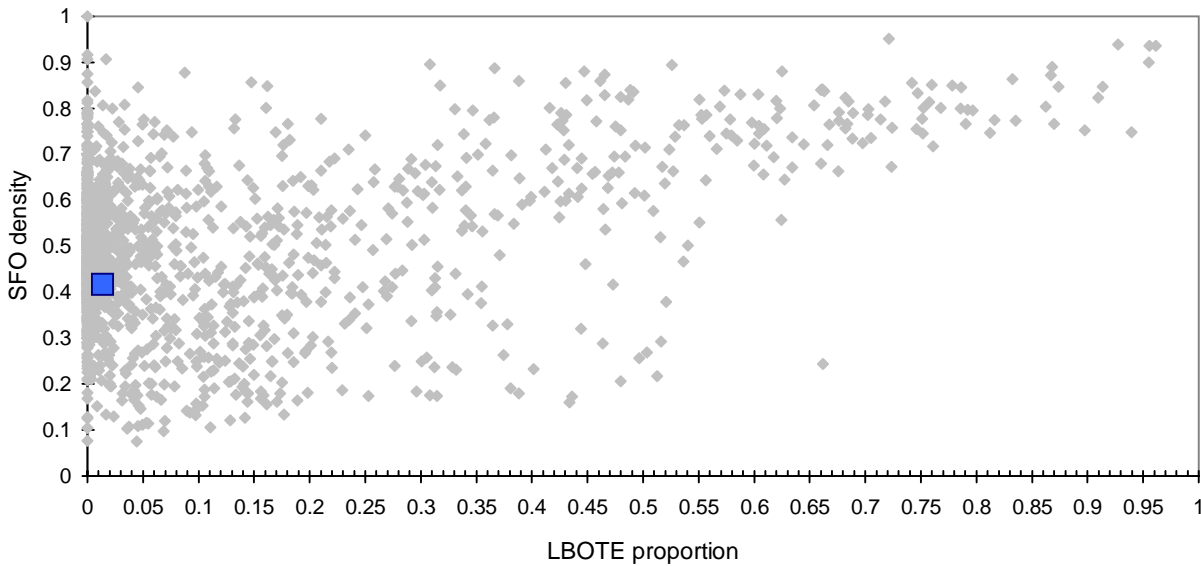
School no: 8350

School name: Sunbury College

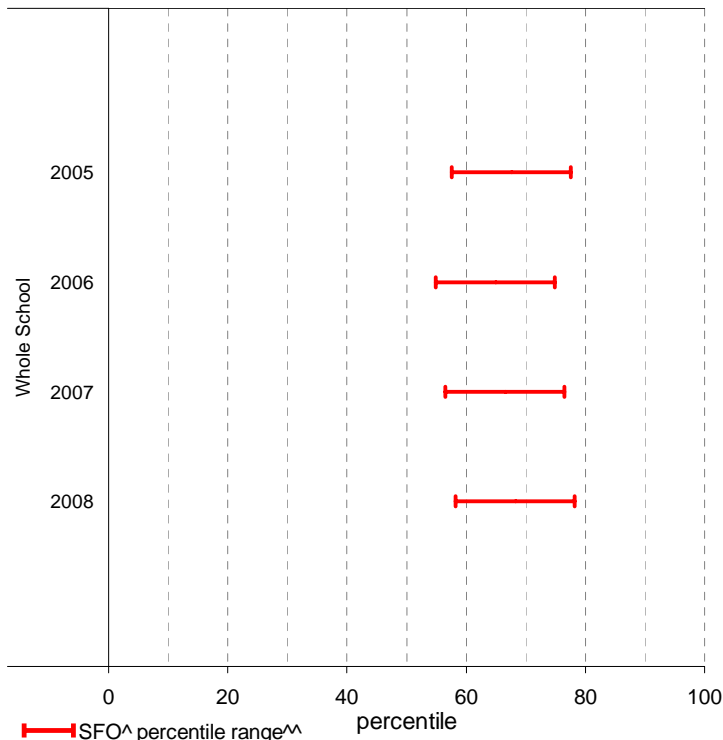
Explanation: The chart below plots the school's 2008 SFO (Student Family Occupation) density<sup>^</sup> and LBOTE (Language Background Other Than English) proportion\* against that of all government schools. This school is highlighted as a square on the chart.

	2001	2002	2003	2004	2005	2006	2007	2008
SFO density <sup>^</sup> :					0.41	0.41	0.42	0.42
LBOTE proportion*:	0.02	0.02	0.02	0.02	0.02	0.02	0.01	0.01

School's 2008 SFO density and LBOTE proportion against that of all government schools



School's SFO<sup>^</sup> percentile range<sup>^^</sup> over time



Notes: <sup>^</sup> The higher the SFO density, the lower the SFO percentile and the lower the socio-economic status (SES).

<sup>^^</sup> The school's SFO percentile range shows the 20% of schools with an SFO Density most like this school.

\* From 2007, a student is LBOTE if either the student or one parent/guardian speaks a language other than English at home. Prior to 2007, a student is LBOTE if the student or one of the parents was born in a non-English speaking country.

# Teacher Judgments against the VELS - Year levels 7-10 combined

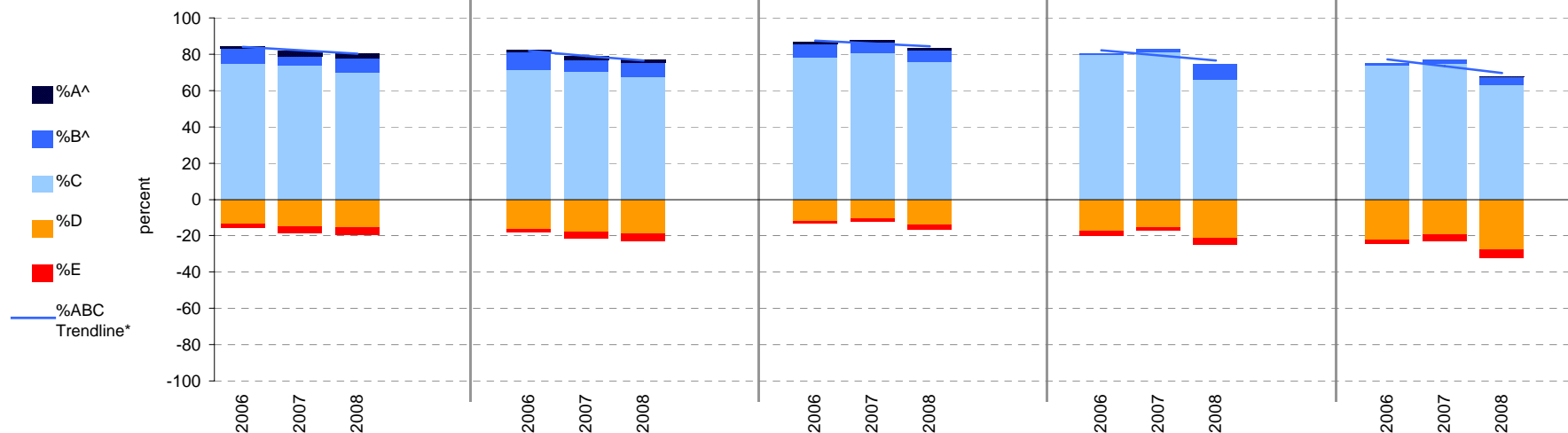
School no: 8350

School name: Sunbury College

Source of data: Data retrieved electronically from CASES21.

Explanation: Teacher judgments of student achievement against the VELS.

Year Levels:	Reading							Writing					Speaking & Listening					Measurement, Chance & Data					Structure								
	total students	% A^	% B^	% C	% D	% E		total students	% A^	% B^	% C	% D	% E		total students	% A^	% B^	% C	% D	% E		total students	% A^	% B^	% C	% D	% E				
7-10	2006	962	1	9	75	14	2	962	1	9	72	16	2	962	1	7	78	12	1	967	0	1	80	17	2	967	0	1	74	22	2
(combined)	2007	970	3	5	74	15	4	969	2	7	70	18	4	969	1	6	80	11	2	973	0	2	81	15	2	973	0	2	75	19	4
	2008	963	2	8	70	15	5	964	2	8	67	19	5	963	1	6	76	14	3	964	0	9	66	21	4	965	0	4	63	27	5



Notes: \* The school trendline is being trialled. It is only plotted when there is data for each calendar year.  
 ^ The cutoff between grades A and B changed in 2007. Further information is available on the following website:  
<http://www.education.vic.gov.au/studentlearning/studentreports/schools/whatsnew.htm>.

# Teacher Judgments against the VELS - English (secondary)

School no: 8350

School name: Sunbury College

Source of data: Data retrieved electronically from CASES21.

Explanation: Teacher judgments of student achievement against the VELS.

Notes: \* The school trendline is only plotted when there is data for each calendar year.

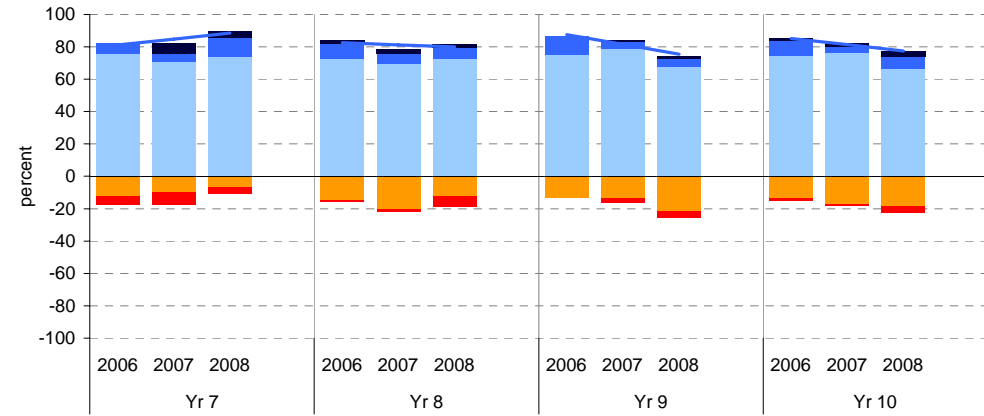
\*\* In 2006, approx. 850 schools assessed their students against the 0.25 VELS scale. 2006 benchmarks are therefore based on a subset of schools.

^ The cutoff between grades A and B changed in 2007. Further information is available on the following website: <http://www.education.vic.gov.au/studentlearning/studentreports/schools/whatsnew.htm>.

^^ 2008 benchmarks and percentiles will be calculated in August, when data from all schools has been submitted.

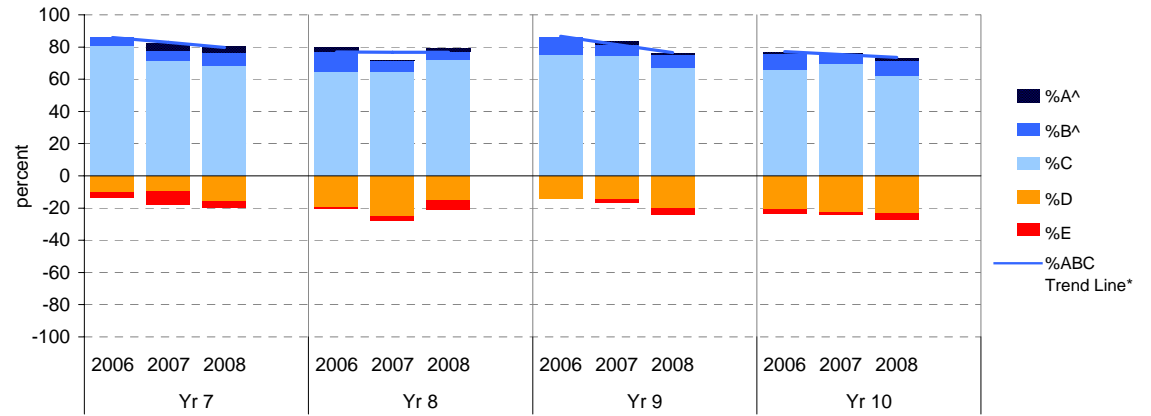
## Reading

	total students	% of students by grade					Mean Score		total students	total students	% of students by grade					Mean Score		
		A^	B^	C	D	E	School	State**			A^	B^	C	D	E	School	State**	
Yr 7	2006	248	0	6	76	12	6	4.33	4.32	2006	213	0	11	75	14	0	5.43	5.26
	2007	257	7	5	70	10	8	4.35	4.39	2007	268	1	4	79	13	3	5.36	5.36
	2008	211	4	12	74	7	4	4.41		2008	230	1	5	68	22	4	5.29	
Yr 8	2006	268	2	9	73	15	1	4.85	4.78	2006	233	1	9	75	13	2	5.87	5.77
	2007	235	3	6	70	20	2	4.82	4.85	2007	210	1	4	77	17	1	5.83	5.85
	2008	258	2	7	73	12	7	4.82		2008	264	3	8	67	19	4	5.80	



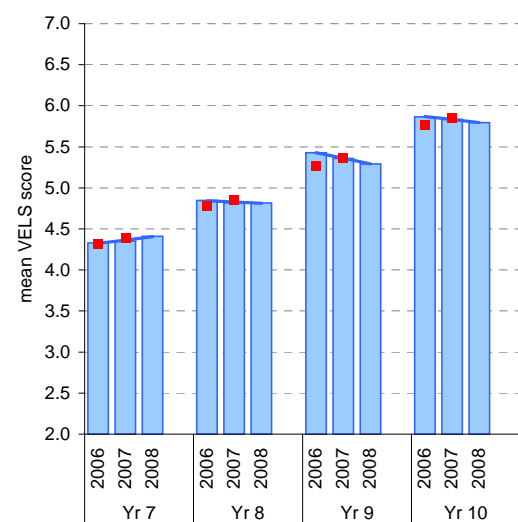
## Writing

	total students	% of students by grade					Mean Score		total students	total students	% of students by grade					Mean Score		
		A^	B^	C	D	E	School	State**			A^	B^	C	D	E	School	State**	
Yr 7	2006	248	0	5	81	10	4	4.37	4.28	2006	213	0	11	75	14	0	5.39	5.25
	2007	257	4	7	72	10	8	4.33	4.36	2007	268	2	7	75	15	2	5.37	5.34
	2008	211	3	9	68	16	4	4.36		2008	230	0	8	67	20	4	5.30	
Yr 8	2006	268	3	12	65	19	1	4.84	4.75	2006	233	1	10	66	21	3	5.82	5.75
	2007	234	0	7	65	25	3	4.77	4.83	2007	210	1	6	70	22	1	5.80	5.83
	2008	259	2	5	72	15	6	4.80		2008	264	2	10	62	23	4	5.77	

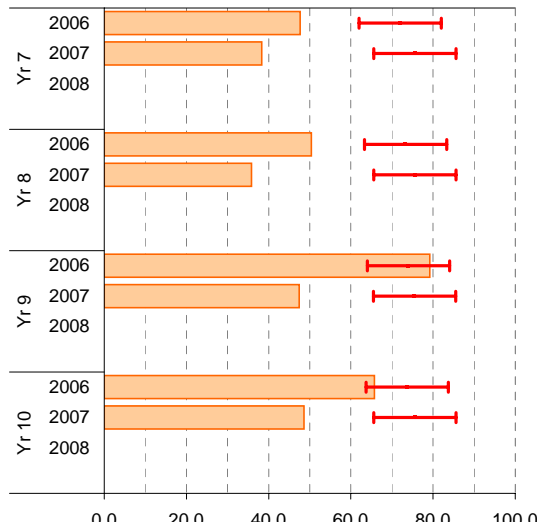


## Reading

School Mean against State Mean^^



School Mean as percentile against SFO percentile range^^

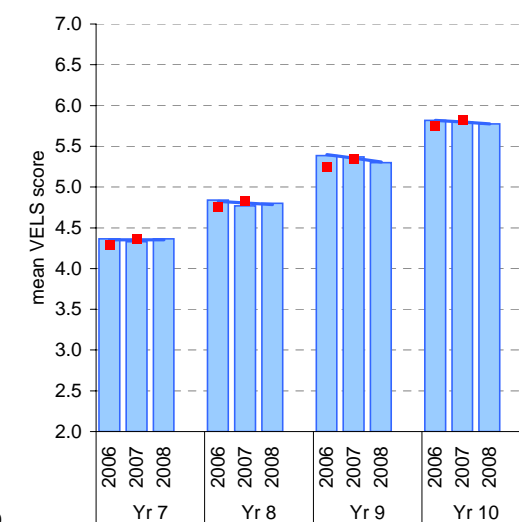


Legend: School Mean (blue bar), State Mean\*\* (red square), School Trendline\* (blue line)

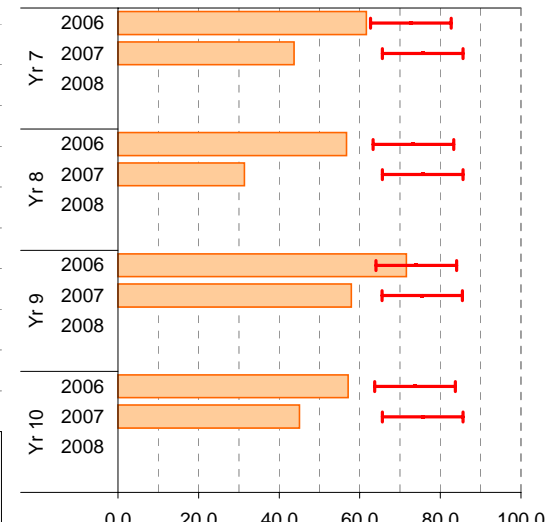
Legend: School Mean as percentile (orange bar), SFO Percentile range (red line with error bars)

## Writing

School Mean against State Mean^^



School Mean as percentile against SFO percentile range^^



Legend: School Mean (blue bar), State Mean\*\* (red square), School Trendline\* (blue line)

Legend: School Mean as percentile (orange bar), SFO Percentile range (red line with error bars)

# Teacher Judgments against the VELS - English (secondary)

School no: 8350

School name: Sunbury College

Source of data: Data retrieved electronically from CASES21.

Explanation: Teacher judgments of student achievement against the VELS.

Notes: \* The school trendline is only plotted when there is data for each calendar year.

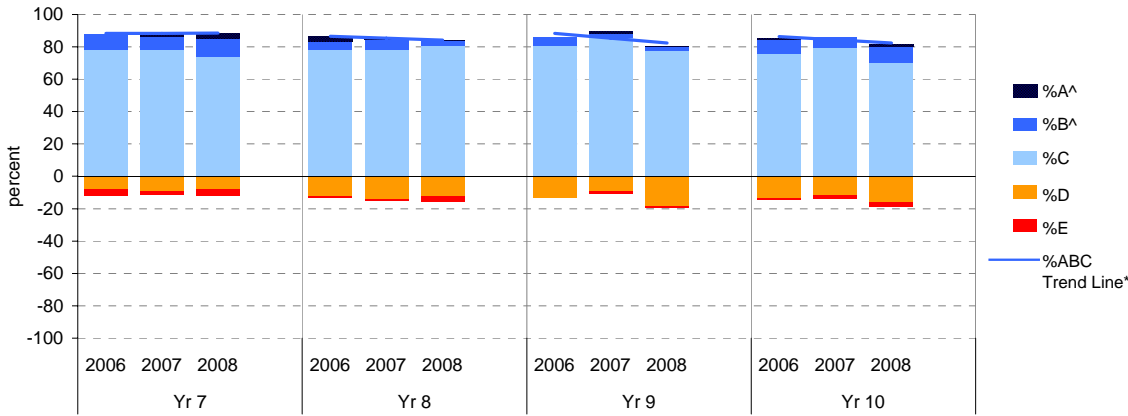
\*\* In 2006, approx. 850 schools assessed their students against the 0.25 VELS scale. 2006 benchmarks are therefore based on a subset of schools.

^ The cutoff between grades A and B changed in 2007. Further information is available on the following website: <http://www.education.vic.gov.au/studentlearning/studentreports/schools/whatsnew.htm>.

^^ 2008 benchmarks and percentiles will be calculated in August, when data from all schools has been submitted.

## Speaking and Listening

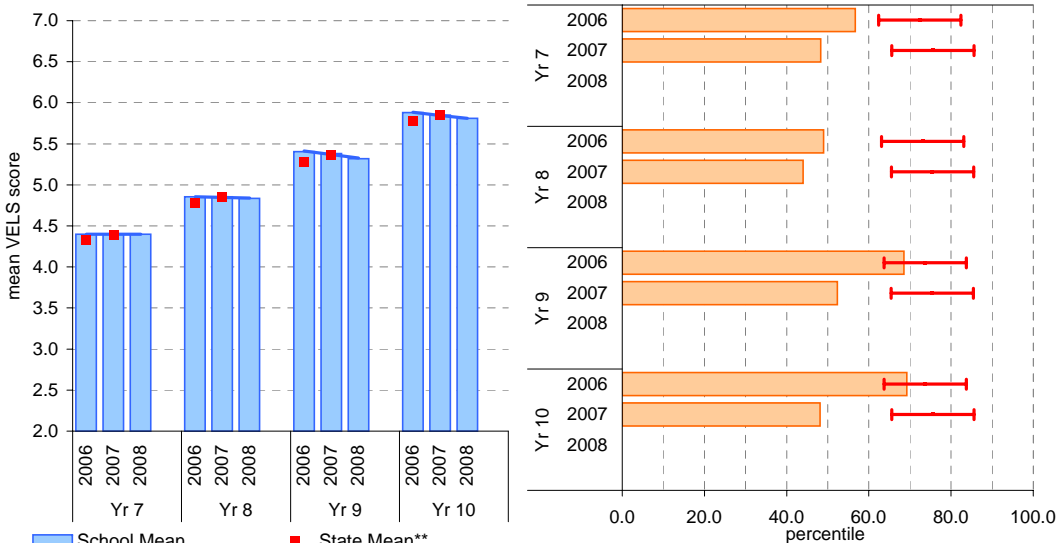
	total students	% of students by grade					Mean Score		total students	% of students by grade	Mean Score							
		A^	B^	C	D	E	School	State**			A^	B^	C	D	E	School	State**	
Yr 7	2006	248	0	10	78	8	4	4.40	4.33	2006	213	0	6	81	14	0	5.40	5.28
	2007	257	3	8	78	9	2	4.40	4.39	2007	267	1	3	85	9	1	5.38	5.36
	2008	210	3	11	74	8	4	4.40		2008	230	0	2	78	18	1	5.32	
Yr 8	2006	268	3	5	79	12	1	4.85	4.79	2006	233	1	9	76	14	1	5.88	5.78
	2007	235	0	6	78	14	1	4.85	4.85	2007	210	0	7	80	11	2	5.85	5.85
	2008	259	0	3	81	12	3	4.83		2008	264	2	9	70	16	3	5.81	



## Speaking and Listening

School Mean against State Mean^^

School Mean as percentile against SFO percentile range^^



Legend for School Mean against State Mean^^: School Mean (blue bar), State Mean\*\* (red square)

Legend for School Mean as percentile against SFO percentile range^^: School Mean as percentile (orange bar), SFO Percentile range (red bracket)

# Teacher Judgments against the VELS - Mathematics (secondary)

School no: 8350

School name: Sunbury College

Source of data: Data retrieved electronically from CASES21.

Explanation: Teacher judgments of student achievement against the VELS.

Notes: \* The school trendline is only plotted when there is data for each calendar year.

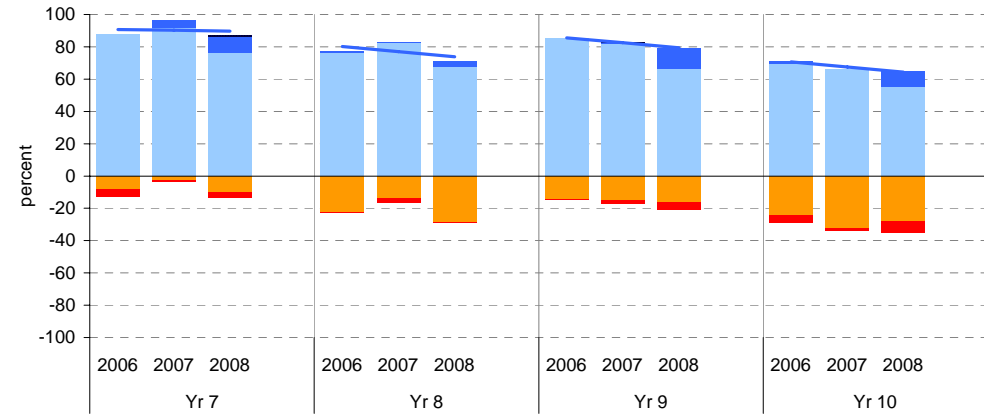
\*\* In 2006, approx. 850 schools assessed their students against the 0.25 VELS scale. 2006 benchmarks are therefore based on a subset of schools.

^ The cutoff between grades A and B changed in 2007. Further information is available on the following website: <http://www.education.vic.gov.au/studentlearning/studentreports/schools/whatsnew.htm>.

^^ 2008 benchmarks and percentiles will be calculated in August, when data from all schools has been submitted.

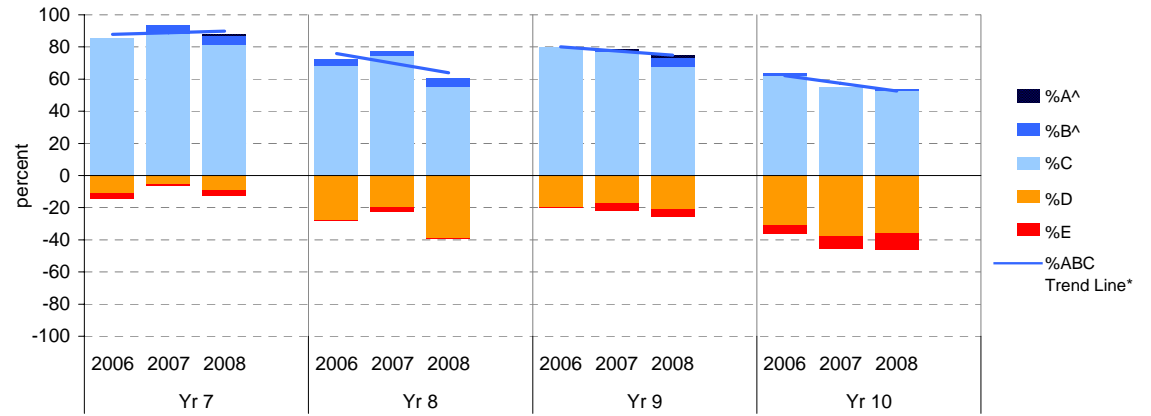
## Measurement, Chance and Data

	total students	% of students by grade					Mean Score		total students	total students	% of students by grade					Mean Score		
		A^	B^	C	D	E	School	State**			A^	B^	C	D	E	School	State**	
Yr 7	2006	251	0	0	88	8	4	4.34	4.31	2006	217	0	0	85	14	0	5.37	5.24
	2007	257	0	5	92	3	1	4.43	4.40	2007	269	0	1	82	15	2	5.32	5.34
	2008	210	0	10	77	10	3	4.35		2008	231	0	13	66	16	4	5.30	
Yr 8	2006	266	0	1	76	23	0	4.81	4.78	2006	233	0	1	70	24	5	5.76	5.66
	2007	237	0	0	83	14	3	4.81	4.83	2007	210	0	0	66	32	1	5.72	5.76
	2008	260	0	3	67	29	0	4.78		2008	263	0	10	56	28	7	5.72	



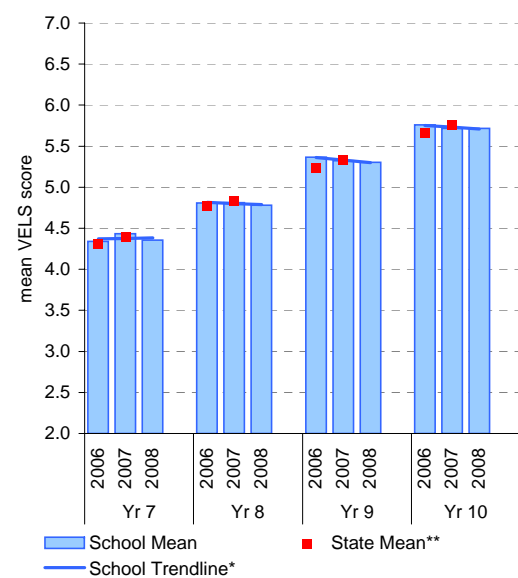
## Structure

	total students	% of students by grade					Mean Score		total students	total students	% of students by grade					Mean Score		
		A^	B^	C	D	E	School	State**			A^	B^	C	D	E	School	State**	
Yr 7	2006	251	0	0	86	11	4	4.33	4.30	2006	217	0	0	80	20	0	5.35	5.21
	2007	257	0	5	88	6	1	4.42	4.39	2007	269	0	1	77	17	4	5.27	5.29
	2008	210	0	6	81	9	3	4.37		2008	231	1	6	68	21	5	5.26	
Yr 8	2006	266	0	4	68	27	0	4.80	4.74	2006	233	0	1	62	31	5	5.74	5.60
	2007	237	0	3	74	20	3	4.78	4.82	2007	210	0	0	55	38	8	5.65	5.72
	2008	260	0	5	55	39	0	4.70		2008	264	0	1	53	36	11	5.60	

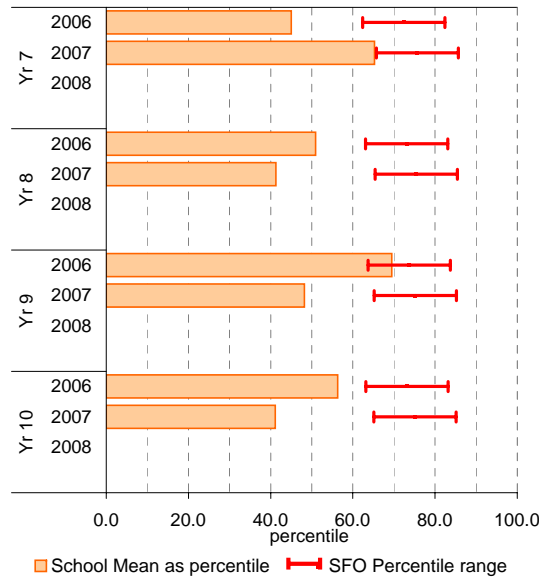


## Measurement, Chance and Data

School Mean against State Mean^^

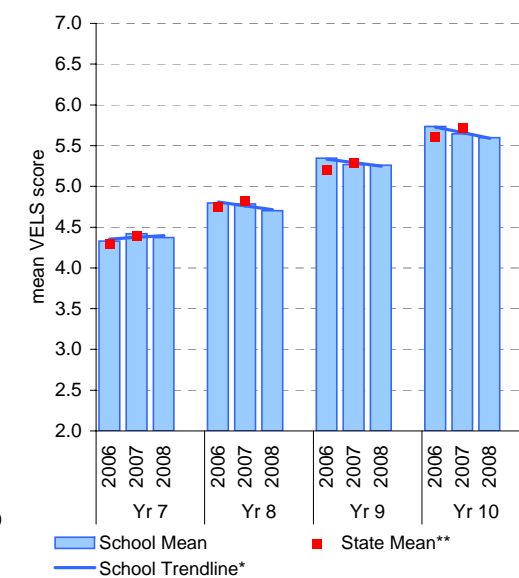


School Mean as percentile against SFO percentile range^^

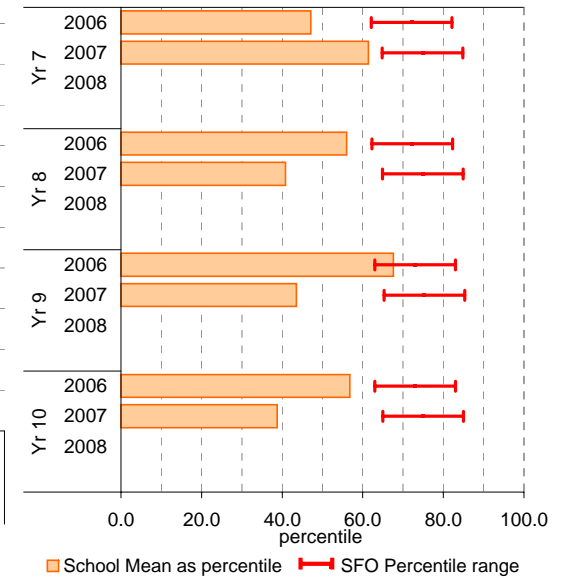


## Structure

School Mean against State Mean^^



School Mean as percentile against SFO percentile range^^



# Teacher Judgments against the VELS - English (secondary)

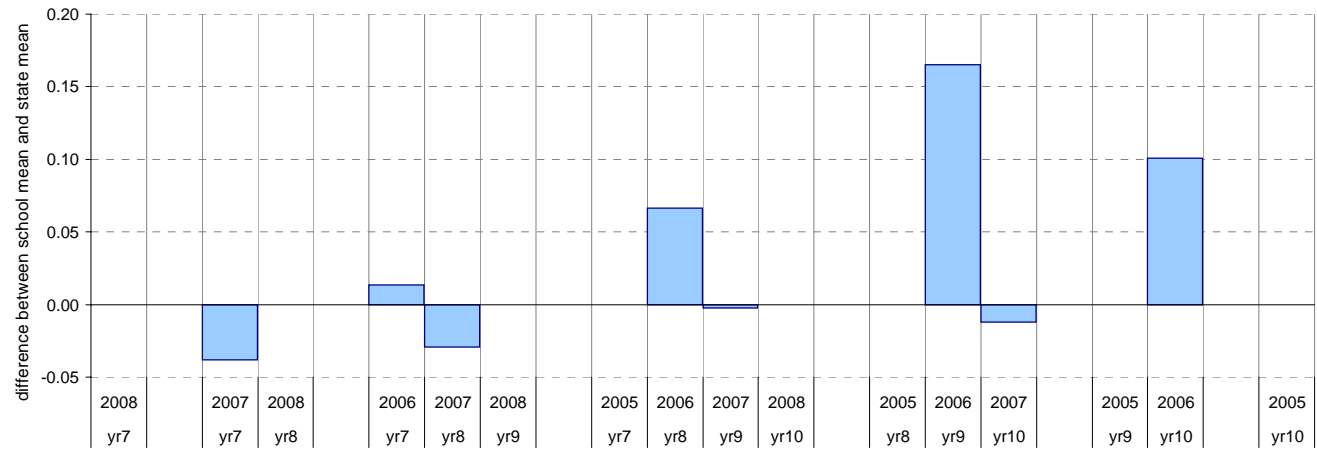
**School no:** 8350  
**School name:** Sunbury College  
**Source of data:** Data retrieved electronically from CASES21.  
**Explanation:** Teacher judgments of student achievement against the VELS.

## Reading

Year Level	Year	Total <sup>1</sup>	Assessed <sup>2</sup>	Level 1			Level 2				Level 3				Level 4				Level 5				Level 6				Level 6E			School mean	State mean <sup>3,4</sup>	Difference between school and state mean <sup>3,4</sup>	
				0.00	0.50	1.00	1.25	1.50	1.75	2.00	2.25	2.50	2.75	3.00	3.25	3.50	3.75	4.00	4.25	4.50	4.75	5.00	5.25	5.50	5.75	6.00	6.25	6.50	6.75				
yr7	2008	211	211								1				7	5	9	47	109	25	8										4.41		
yr7	2007	257	257					1			3	3	5	8	11	14	34	147	14	16			1							4.35	4.39	-0.04	
yr8	2008	260	258										3	5	9	11	20	64	124			18	4							4.82			
yr7	2006	251	248					1			3	3	7	11	19	44	144	15	1											4.33	4.32	0.01	
yr8	2007	238	235										1	2	1	8	39	78	86			14	2	4					4.82	4.85	-0.03		
yr9	2008	232	230										1		1	2	5	15	35			50	106	12	3				5.29				
yr7	2005																																
yr8	2006	269	268							1					2	14	26	97	98			21	3	4	2				4.85	4.78	0.07		
yr9	2007	269	268													3	5	4	31			59	153	11	1	1		5.36	5.36	0.00			
yr10	2008	264	264	1												2		2	5			5	45	82	94	20	7	1	5.80				
yr8	2005																																
yr9	2006	217	213																		29	35	125	15	9			5.43	5.26	0.17			
yr10	2007	214	210																		2	12	24	61	100	8	3	5.83	5.85	-0.01			
yr9	2005																																
yr10	2006	233	233																														
yr10	2005																																

shading indicates a 'C' grade (at the expected standard) on the VELS scale.  
<sup>1</sup> The total number of students eligible to be assessed. This figure will typically match, or be very close to, the Year Level enrolment.  
<sup>2</sup> The number of students assessed against the VELS. The difference between this figure and the total (1) should be accounted for by students assessed against Individual Learning Plans and/or the ESL companion in the case of English.  
<sup>3</sup> In 2006, approx. 850 schools assessed their students against the 0.25 VELS scale. 2006 benchmarks are therefore based on a subset of schools.  
<sup>4</sup> 2008 benchmarks will be calculated in August, when data from all schools has been submitted.

Difference between school mean and state mean<sup>3,4</sup>, by cohort group



# Teacher Judgments against the VELS - English (secondary)

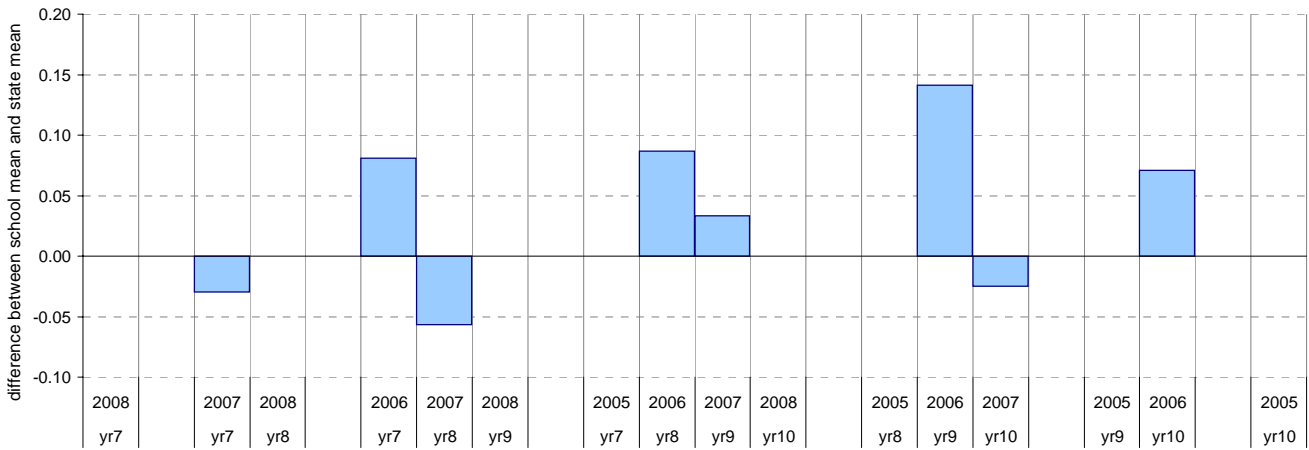
**School no:** 8350  
**School name:** Sunbury College  
**Source of data:** Data retrieved electronically from CASES21.  
**Explanation:** Teacher judgments of student achievement against the VELS.

## Writing

Year Level	Year	Total <sup>1</sup>	Assessed <sup>2</sup>	Level 1			Level 2				Level 3				Level 4				Level 5				Level 6				Level 6E			School mean	State mean <sup>3</sup>	Difference between school and state mean <sup>4</sup>				
				0.00	0.50	1.00	1.25	1.50	1.75	2.00	2.25	2.50	2.75	3.00	3.25	3.50	3.75	4.00	4.25	4.50	4.75	5.00	5.25	5.50	5.75	6.00	6.25	6.50	6.75							
yr7	2008	211	211											3	1	4	6	28	36	108	18	6	1										4.36			
yr7	2007	257	257							1				2	6	4	8	8	17	44	140	17	8	2									4.33	4.36	-0.03	
yr8	2008	260	259													2	5	9	14	24	64	123	14	4									4.80			
yr7	2006	251	248							1					2	1	5	8	17	43	158	11	2											4.37	4.28	0.08
yr8	2007	238	234															7	8	51	80	71			16	1							4.77	4.83	-0.06	
yr9	2008	232	230															3	7	6	40			60	95	18	1							5.30		
yr7	2005																																			
yr8	2006	269	268											1				2	10	42	95	79			28	4	7							4.84	4.75	0.09
yr9	2007	269	268																2	4	10	29			53	147	18	5						5.37	5.34	0.03
yr10	2008	264	264																1	3	1	5			7	54	80	83			26	4		5.77		
yr8	2005																																			
yr9	2006	217	213																																	
yr10	2007	214	210																																	
yr9	2005																																			
yr10	2006	233	233																																	
yr10	2005																																			

shading indicates a 'C' grade (at the expected standard) on the VELS scale.  
<sup>1</sup> The total number of students eligible to be assessed. This figure will typically match, or be very close to, the Year Level enrolment.  
<sup>2</sup> The number of students assessed against the VELS. The difference between this figure and the total (1) should be accounted for by students assessed against Individual Learning Plans and/or the ESL companion in the case of English.  
<sup>3</sup> In 2006, approx. 850 schools assessed their students against the 0.25 VELS scale. 2006 benchmarks are therefore based on a subset of schools.  
<sup>4</sup> 2008 benchmarks will be calculated in August, when data from all schools has been submitted.

Difference between school mean and state mean<sup>4</sup>, by cohort group



# Teacher Judgments against the VELS - English (secondary)

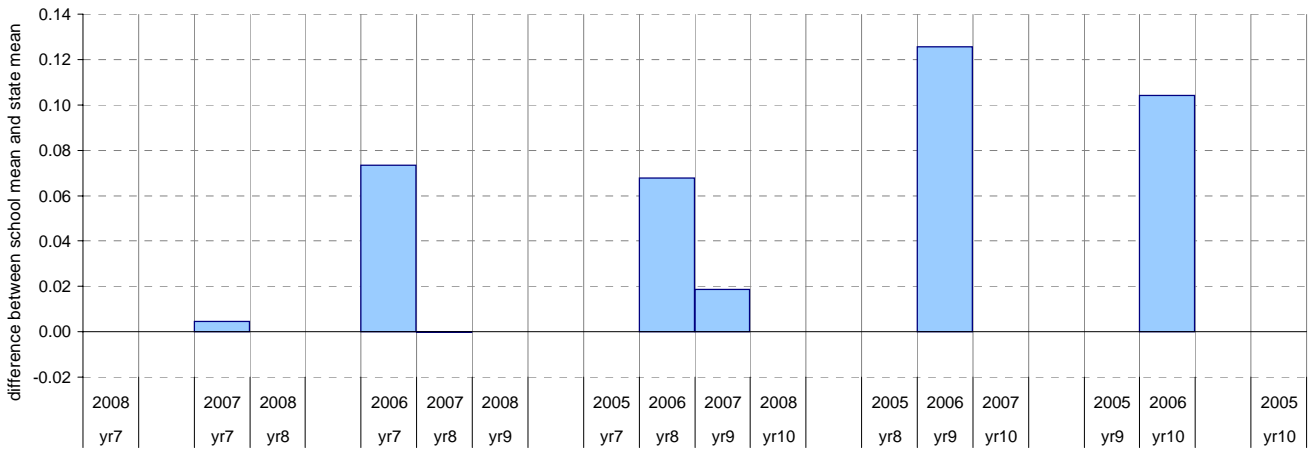
**School no:** 8350  
**School name:** Sunbury College  
**Source of data:** Data retrieved electronically from CASES21.  
**Explanation:** Teacher judgments of student achievement against the VELS.

## Speaking and Listening

Year Level	Year	Total <sup>1</sup>	Assessed <sup>2</sup>	Level 1			Level 2			Level 3			Level 4			Level 5			Level 6			Level 6E			School mean	State mean <sup>^</sup>	Difference between school and state mean <sup>^</sup>			
				0.00	0.50	1.00	1.25	1.50	1.75	2.00	2.25	2.50	2.75	3.00	3.25	3.50	3.75	4.00	4.25	4.50	4.75	5.00	5.25	5.50				5.75	6.00	6.25
yr7	2008	211	210							1			3	4	4	13	45	110	24	6								4.40		
yr7	2007	257	257	1						1	2		1		9	14	44	157	21	5	2						4.40	4.39	0.00	
yr8	2008	260	259											2	7		12	20	66	144	7	1					4.83			
yr7	2006	251	248				1			1	2			5	2	19	35	159	19	5							4.40	4.33	0.07	
yr8	2007	238	235									1				1	4	29	74	110	15	1				4.85	4.85	0.00		
yr9	2008	232	230										1				1	1	8	34	64	115	5	1		5.32				
yr7	2005																													
yr8	2006	269	268					1								2	6	27	107	104	12	1	5	3		4.85	4.79	0.07		
yr9	2007	269	267														4	6	18	71	157	8	3		5.38	5.36	0.02			
yr10	2008	264	264	2													1	1	3	7	35	78	108	25	3	1	5.81			
yr8	2005																													
yr9	2006	217	213																29	38	134	9	3			5.40	5.28	0.13		
yr10	2007	214	210																5	8	16	66	101	14		5.85	5.85	0.00		
yr9	2005																													
yr10	2006	233	233																2	6	26	62	114	18	3	2	5.88	5.78	0.10	
yr10	2005																													

shading indicates a 'C' grade (at the expected standard) on the VELS scale.  
<sup>1</sup> The total number of students eligible to be assessed. This figure will typically match, or be very close to, the Year Level enrolment.  
<sup>2</sup> The number of students assessed against the VELS. The difference between this figure and the total (1) should be accounted for by students assessed against Individual Learning Plans and/or the ESL companion in the case of English.  
<sup>\*</sup> In 2006, approx. 850 schools assessed their students against the 0.25 VELS scale. 2006 benchmarks are therefore based on a subset of schools.  
<sup>^</sup> 2008 benchmarks will be calculated in August, when data from all schools has been submitted.

Difference between school mean and state mean<sup>^</sup>, by cohort group



# Teacher Judgments against the VELS - Mathematics (secondary)

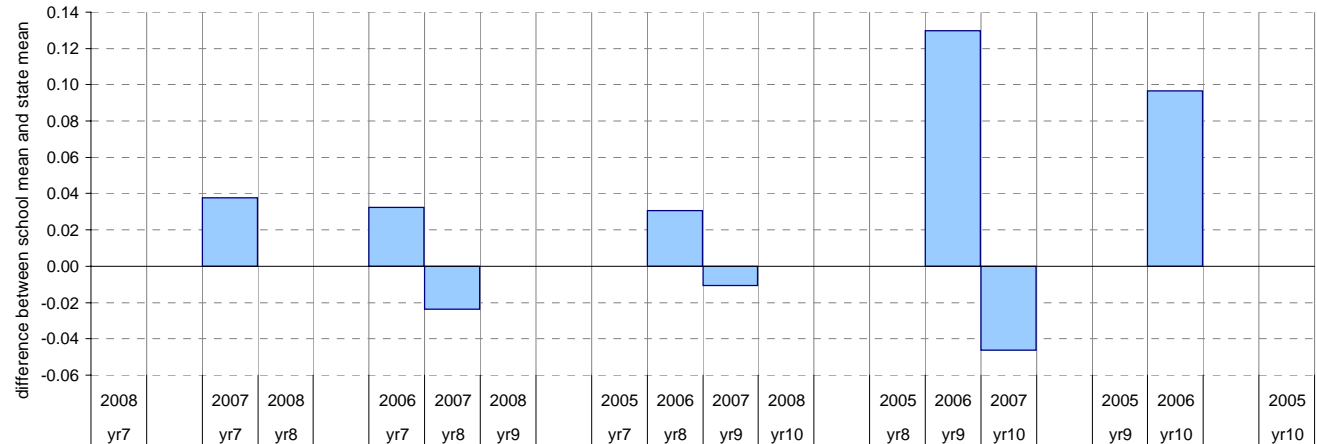
**School no:** 8350  
**School name:** Sunbury College  
**Source of data:** Data retrieved electronically from CASES21.  
**Explanation:** Teacher judgments of student achievement against the VELS.

## Measurement, Chance and Data

Year Level	Year	Total <sup>1</sup>	Assessed <sup>2</sup>	Level 1			Level 2				Level 3				Level 4				Level 5				Level 6				Level 6E			School mean	State mean <sup>3</sup>	Difference between school and state mean <sup>4</sup>							
				0.00	0.50	1.00	1.25	1.50	1.75	2.00	2.25	2.50	2.75	3.00	3.25	3.50	3.75	4.00	4.25	4.50	4.75	5.00	5.25	5.50	5.75	6.00	6.25	6.50	6.75										
yr7	2008	211	210												2	5	2	19	70	91	20	1													4.35				
yr7	2007	257	257												2	2	5	55	181	12															4.43	4.40	0.04		
yr8	2008	260	260													1	13	62	69	106							9									4.78			
yr7	2006	251	251				1								1		1	8	159																4.34	4.31	0.03		
yr8	2007	238	237												1	3	3	9	24	72	124							1									4.81	4.83	-0.02
yr9	2008	232	231													2	4	4	9	29							80	73	30							5.30			
yr7	2005																																						
yr8	2006	269	266												1		4	56	76	126							3										4.81	4.78	0.03
yr9	2007	269	269														6	12	28							77	143	2	1							5.32	5.34	-0.01	
yr10	2008	264	263														1	3	15							20	53	77	69			25				5.72			
yr8	2005																																						
yr9	2006	217	217														1	4	27							47	138									5.37	5.24	0.13	
yr10	2007	213	210														1		2							16	52	73	66								5.72	5.76	-0.05
yr9	2005																																						
yr10	2006	233	233																																				
yr10	2005																																						

shading indicates a 'C' grade (at the expected standard) on the VELS scale.  
<sup>1</sup> The total number of students eligible to be assessed. This figure will typically match, or be very close to, the Year Level enrolment.  
<sup>2</sup> The number of students assessed against the VELS. The difference between this figure and the total (1) should be accounted for by students assessed against Individual Learning Plans and/or the ESL companion in the case of English.  
<sup>3</sup> In 2006, approx. 850 schools assessed their students against the 0.25 VELS scale. 2006 benchmarks are therefore based on a subset of schools.  
<sup>4</sup> 2008 benchmarks will be calculated in August, when data from all schools has been submitted.

Difference between school mean and state mean<sup>4</sup>, by cohort group



# Teacher Judgments against the VELS - Mathematics (secondary)

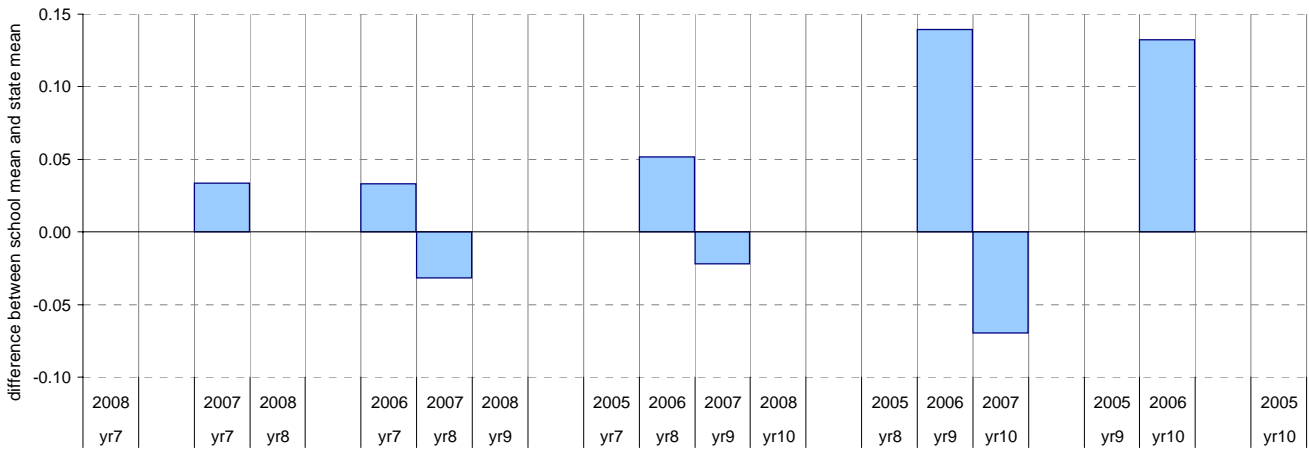
**School no:** 8350  
**School name:** Sunbury College  
**Source of data:** Data retrieved electronically from CASES21.  
**Explanation:** Teacher judgments of student achievement against the VELS.

## Structure

Year Level	Year	Total <sup>1</sup>	Assessed <sup>2</sup>	Level 1			Level 2			Level 3			Level 4			Level 5			Level 6			Level 6E			School mean	State mean <sup>3</sup>	Difference between school and state mean <sup>4</sup>			
				0.00	0.50	1.00	1.25	1.50	1.75	2.00	2.25	2.50	2.75	3.00	3.25	3.50	3.75	4.00	4.25	4.50	4.75	5.00	5.25	5.50				5.75	6.00	6.25
yr7	2008	211	210									4	3	3	16	47	124	12	1									4.37		
yr7	2007	257	257								1	1		2	13	52	174	14									4.42	4.39	0.03	
yr8	2008	260	260											1		27	75	89	54	14								4.70		
yr7	2006	251	251				1	1		1		3	3	6	21	59	156										4.33	4.30	0.03	
yr8	2007	238	237										2	5		13	34	73	103	7							4.78	4.82	-0.03	
yr9	2008	232	231										1	1		4	5	12	36	79	77	14	2				5.26			
yr7	2005																													
yr8	2006	269	266									1				13	60	63	119	10							4.80	4.74	0.05	
yr9	2007	269	269													3	9	12	34	98	110	2	1				5.27	5.29	-0.02	
yr10	2008	264	264													3	5	7	13	34	60	67	73	2			5.60			
yr8	2005																													
yr9	2006	217	217													1		43		44	129						5.35	5.21	0.14	
yr10	2007	213	210													1		15		18	61	55	60				5.65	5.72	-0.07	
yr9	2005																													
yr10	2006	233	233													2	3	7		7	66	41	104	3			5.74	5.60	0.13	
yr10	2005																													

shading indicates a 'C' grade (at the expected standard) on the VELS scale.  
<sup>1</sup> The total number of students eligible to be assessed. This figure will typically match, or be very close to, the Year Level enrolment.  
<sup>2</sup> The number of students assessed against the VELS. The difference between this figure and the total (1) should be accounted for by students assessed against Individual Learning Plans and/or the ESL companion in the case of English.  
<sup>3</sup> In 2006, approx. 850 schools assessed their students against the 0.25 VELS scale. 2006 benchmarks are therefore based on a subset of schools.  
<sup>4</sup> 2008 benchmarks will be calculated in August, when data from all schools has been submitted.

Difference between school mean and state mean<sup>4</sup>, by cohort group



# NAPLAN Year 7 and 9: Reading

School no: 8350

School name: Sunbury College

Source of data: Victorian Curriculum and Assessment Authority.

Explanation: The National Assessment Program - Literacy and Numeracy (NAPLAN) is conducted each year for students in Years 3, 5, 7 and 9. For more detailed NAPLAN data, refer to the NAPLAN Data Service website at <http://naplands.vcaa.vic.edu.au>. A reference guide for analysing NAPLAN data is available at <http://www.vcaa.vic.edu.au/vcaa/prep10/naplan/schools/analysingnaplandata.pdf>.

Notes: \* % student participation = (students who participated in NAPLAN / February enrolments) \* 100

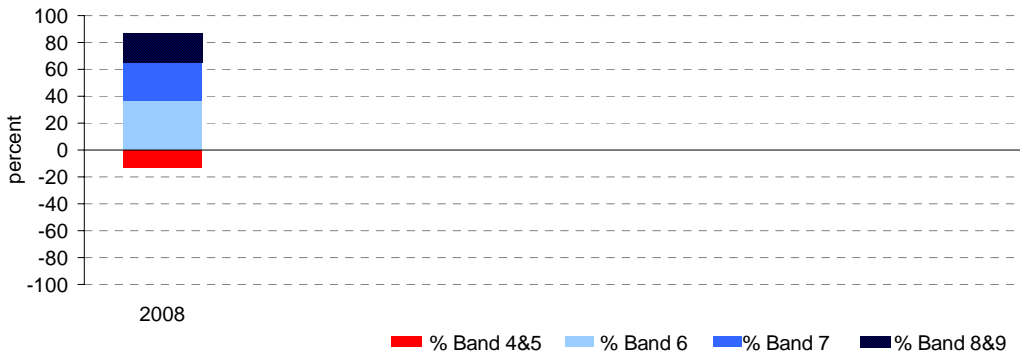
## Year 7

	student participation		Percent of students by NAP Band						Mean Scaled Score	
	(n)	(%)*	Band 4	Band 5	Band 6	Band 7	Band 8	Band 9	School	State
2008	209	98	3	10	37	27	18	4	535.8	531.1

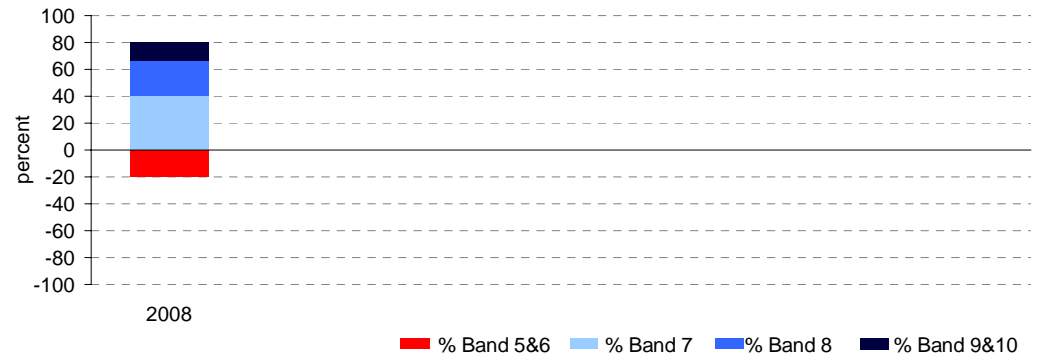
## Year 9

	student participation		Percent of students by NAP Band						Mean Scaled Score	
	(n)	(%)*	Band 5	Band 6	Band 7	Band 8	Band 9	Band 10	School	State
2008	230	94	4	16	40	27	11	2	571.2	572.5

Percent of students by NAP Band

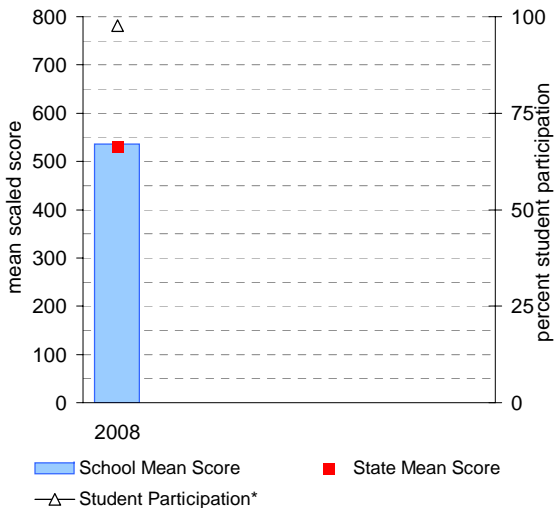


Percent of students by NAP Band

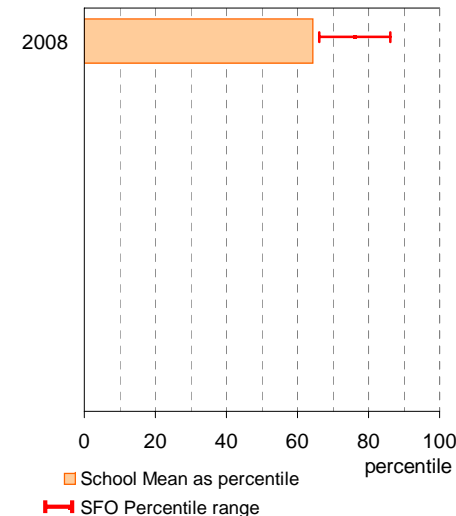


## Year 7

School Mean against State Mean, including Participation

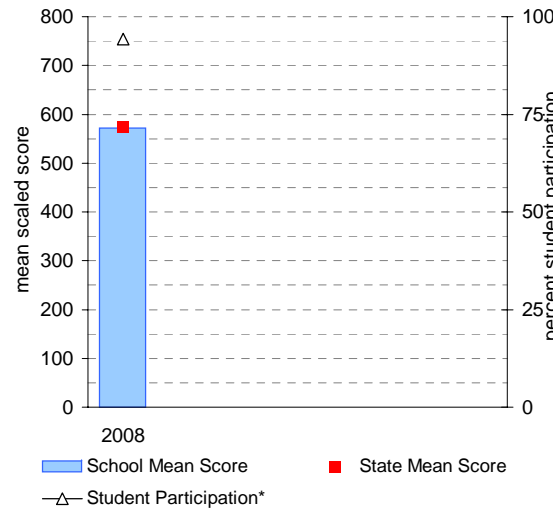


School Mean as percentile against SFO percentile range

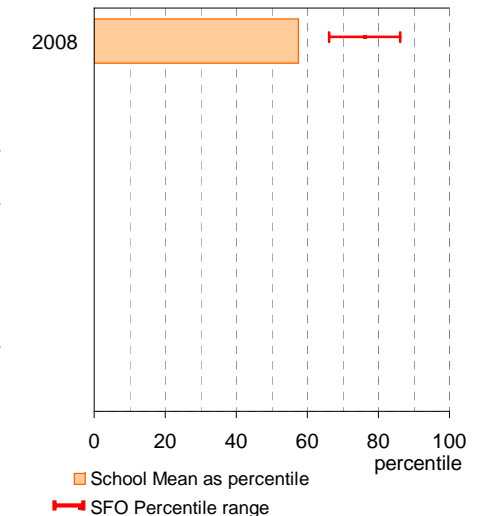


## Year 9

School Mean against State Mean, including Participation



School Mean as percentile against SFO percentile range



# NAPLAN Year 7 and 9: Writing

School no: 8350

School name: Sunbury College

Source of data: Victorian Curriculum and Assessment Authority.

Explanation: The National Assessment Program - Literacy and Numeracy (NAPLAN) is conducted each year for students in Years 3, 5, 7 and 9. For more detailed NAPLAN data, refer to the NAPLAN Data Service website at <http://naplands.vcaa.vic.edu.au>. A reference guide for analysing NAPLAN data is available at <http://www.vcaa.vic.edu.au/vcaa/prep10/naplan/schools/analysingnaplandata.pdf>.

Notes: \* % student participation = (students who participated in NAPLAN / February enrolments) \* 100

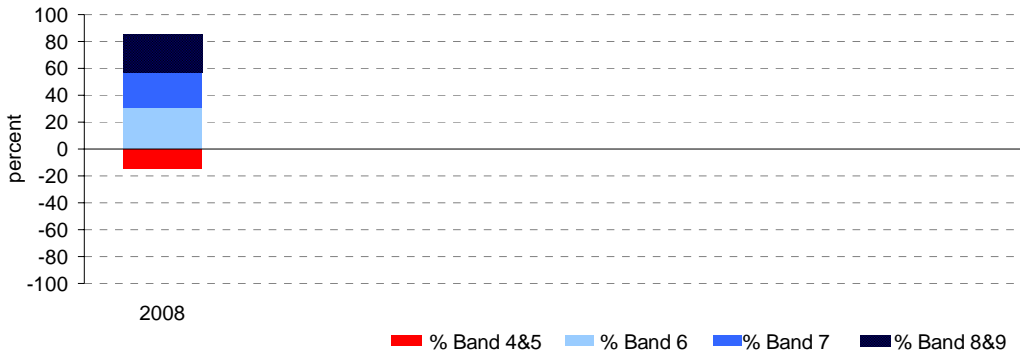
## Year 7

student participation			Percent of students by NAP Band						Mean Scaled Score	
(n)	(%)*		Band 4	Band 5	Band 6	Band 7	Band 8	Band 9	School	State
2008	213	100	8	7	31	27	19	9	533.2	534.0

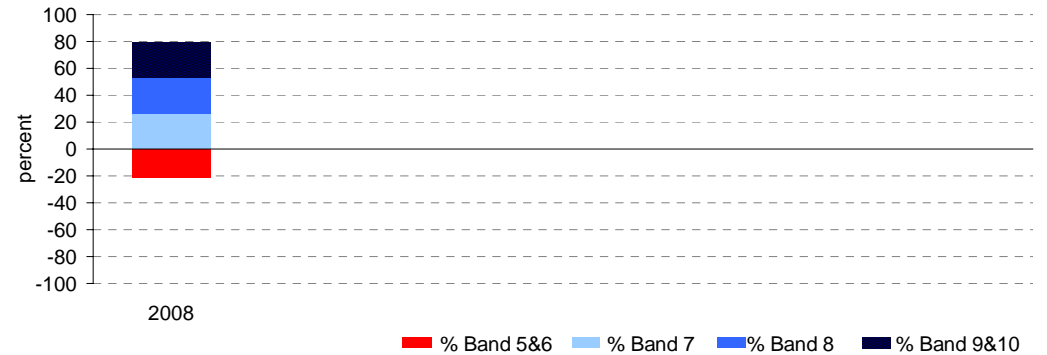
## Year 9

student participation			Percent of students by NAP Band						Mean Scaled Score	
(n)	(%)*		Band 5	Band 6	Band 7	Band 8	Band 9	Band 10	School	State
2008	228	93	4	17	26	27	15	11	588.3	571.4

Percent of students by NAP Band

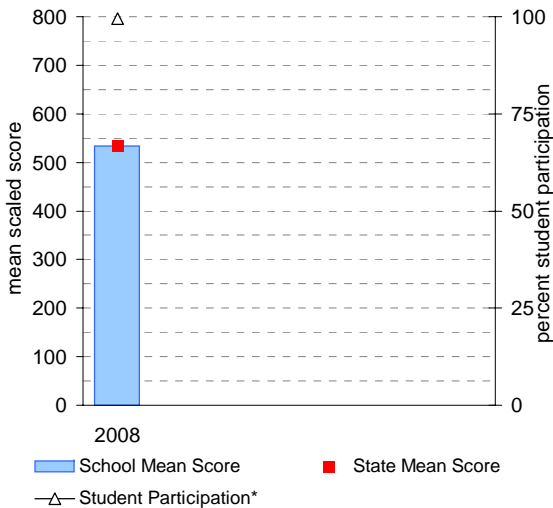


Percent of students by NAP Band

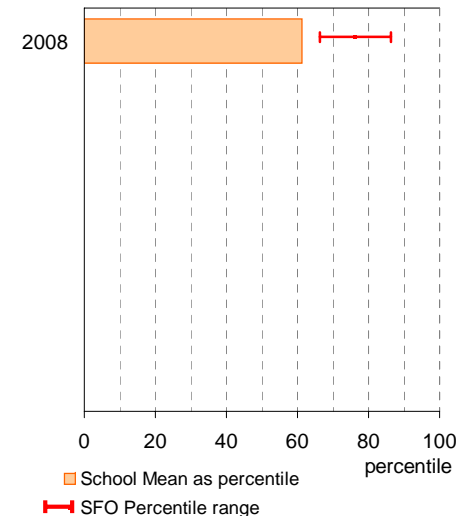


## Year 7

School Mean against State Mean, including Participation

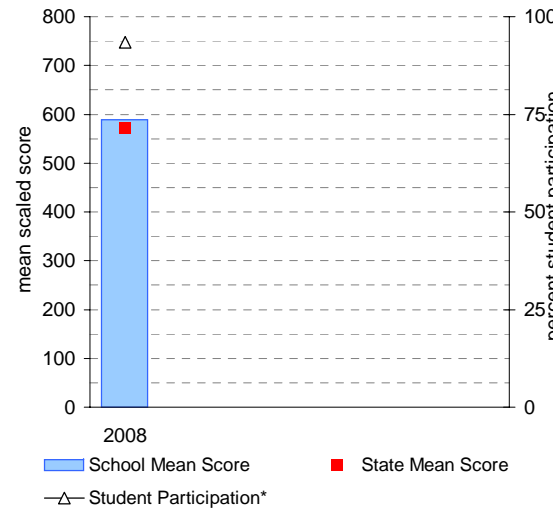


School Mean as percentile against SFO percentile range

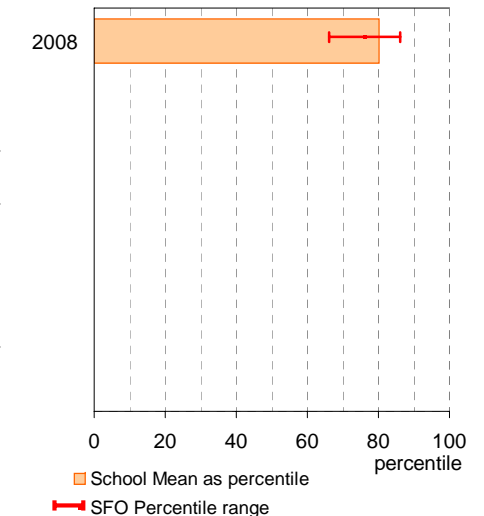


## Year 9

School Mean against State Mean, including Participation



School Mean as percentile against SFO percentile range



# NAPLAN Year 7 and 9: Numeracy

School no: 8350

School name: Sunbury College

Source of data: Victorian Curriculum and Assessment Authority.

Explanation: The National Assessment Program - Literacy and Numeracy (NAPLAN) is conducted each year for students in Years 3, 5, 7 and 9. For more detailed NAPLAN data, refer to the NAPLAN Data Service website at <http://naplands.vcaa.vic.edu.au>. A reference guide for analysing NAPLAN data is available at <http://www.vcaa.vic.edu.au/vcaa/prep10/naplan/schools/analysingnaplandata.pdf>.

Notes: \* % student participation = (students who participated in NAPLAN / February enrolments) \* 100

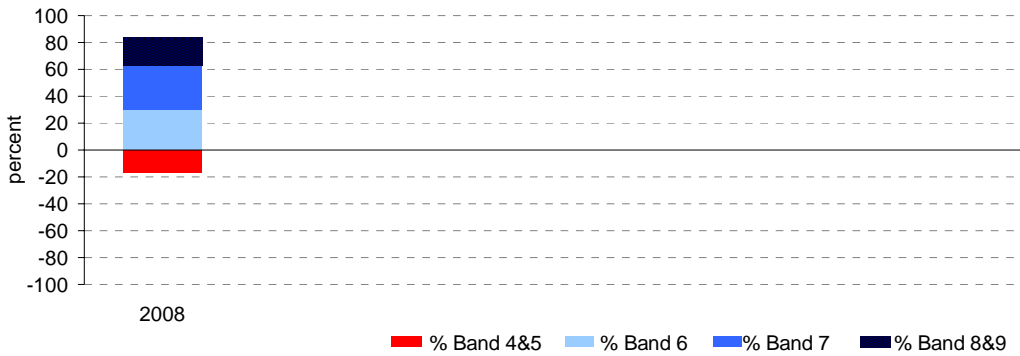
## Year 7

student participation			Percent of students by NAP Band						Mean Scaled Score	
(n)	(%)*		Band 4	Band 5	Band 6	Band 7	Band 8	Band 9	School	State
2008	213	100	2	15	30	33	16	5	535.4	541.2

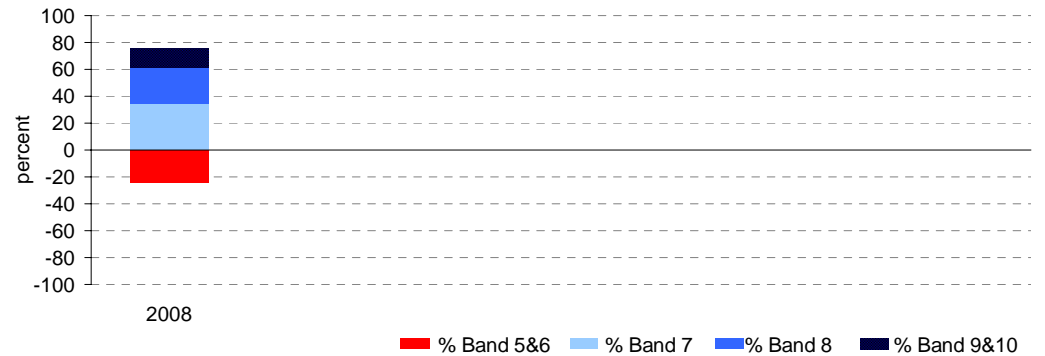
## Year 9

student participation			Percent of students by NAP Band						Mean Scaled Score	
(n)	(%)*		Band 5	Band 6	Band 7	Band 8	Band 9	Band 10	School	State
2008	228	93	4	21	34	27	10	4	573.6	579.0

Percent of students by NAP Band

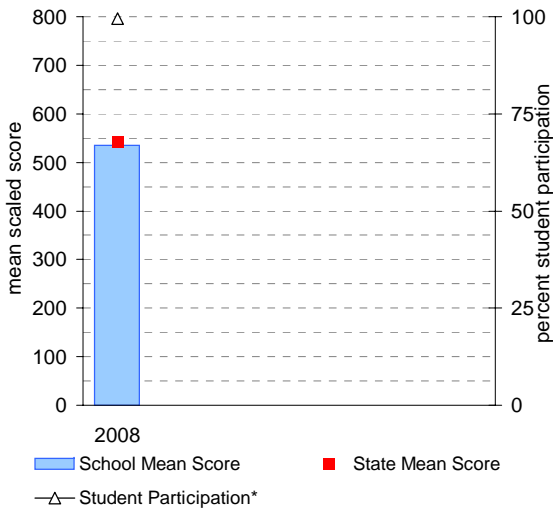


Percent of students by NAP Band

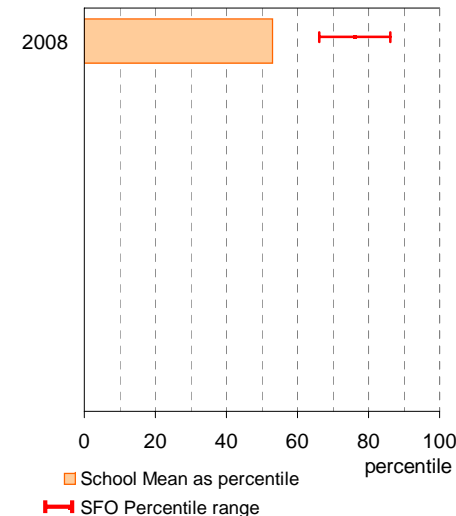


## Year 7

School Mean against State Mean, including Participation

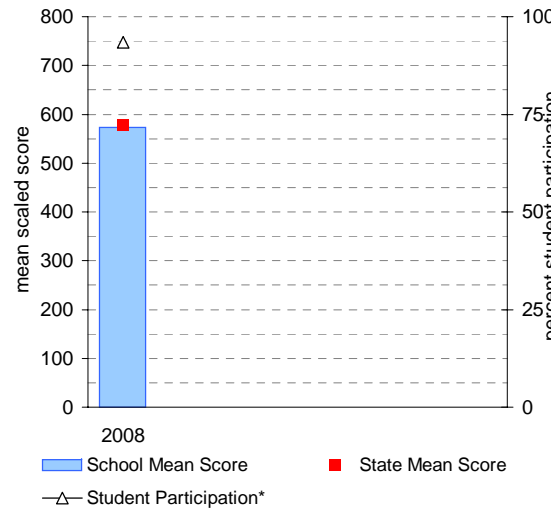


School Mean as percentile against SFO percentile range

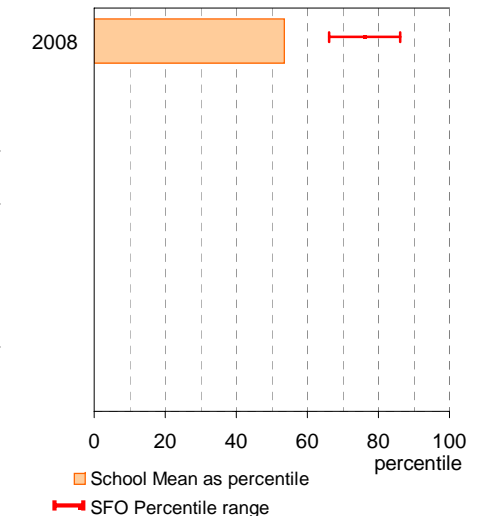


## Year 9

School Mean against State Mean, including Participation



School Mean as percentile against SFO percentile range



# AIM Year 7 and 9: Reading

School no: 8350

School name: Sunbury College

Source of data: Victorian Curriculum and Assessment Authority.

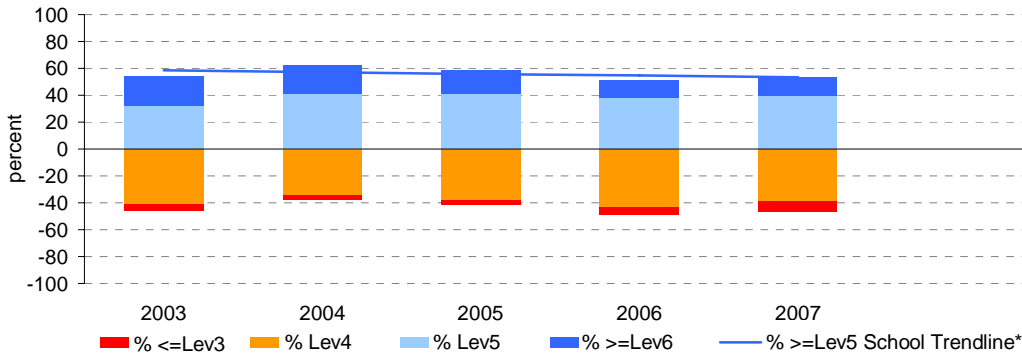
Explanation: The Achievement Improvement Monitor (AIM) was a statewide assessment program conducted each year up until and including 2007 for students in Years 3, 5, 7 and 9. This has now been replaced by NAPLAN. For more detailed AIM data, refer to the AIM Data Service website at <http://aimds.vcaa.vic.edu.au>.

Notes: \* The school trendline is only plotted when there is data for each calendar year.  
 \*\* % student participation = (students who participated in AIM / Feb enrolments) \* 100

## Year 7

	student participation		Percent of students by VELS level							Mean CSF / VELS Score	
	(n)	(%)**	Lev1	Lev2	Lev3	Lev4	Lev5	Lev6	Lev6E	School	State
2003	226	93	0	0	4	42	32	22	0	4.2	4.1
2004	211	99	0	0	3	34	41	22	0	4.3	4.2
2005	257	96	0	0	4	38	41	17	0	4.2	4.2
2006	243	96	0	0	5	44	38	13	0	4.1	4.2
2007	256	98	0	0	8	39	39	14	0	4.1	4.1

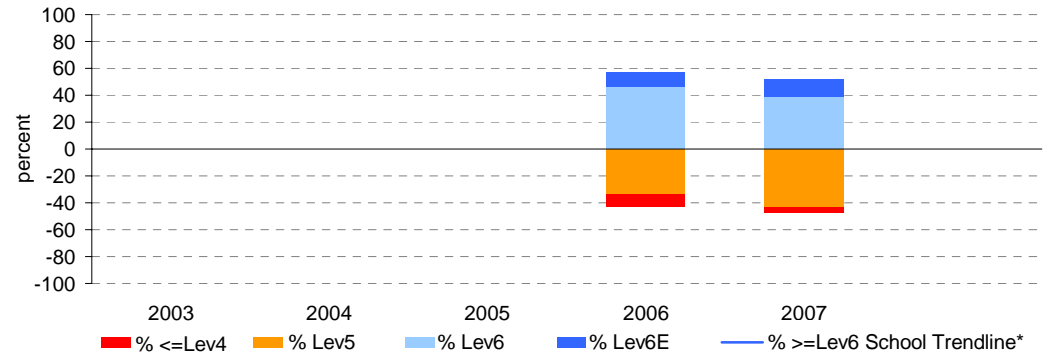
Percent of students by VELS level



## Year 9

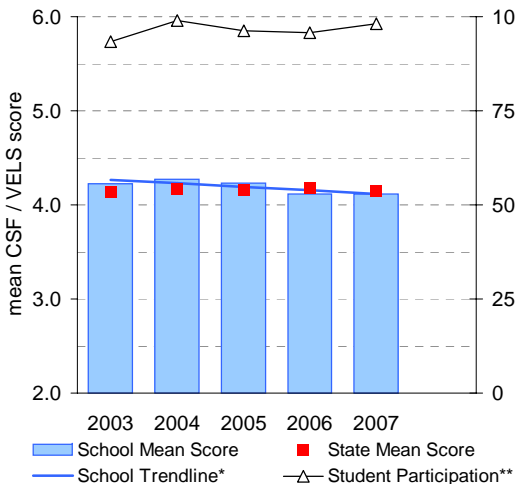
	student participation		Percent of students by VELS level							Mean CSF / VELS Score	
	(n)	(%)**	Lev1	Lev2	Lev3	Lev4	Lev5	Lev6	Lev6E	School	State
2003											
2004											
2005											
2006	206	94	0	0	0	9	33	46	11	5.1	5.1
2007	253	93	0	0	0	4	44	39	13	5.1	5.1

Percent of students by VELS level

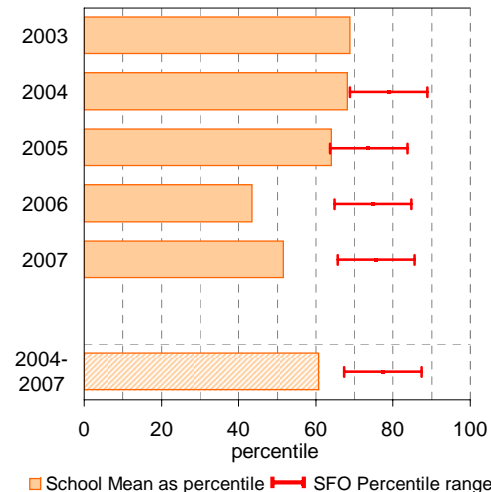


## Year 7

School Mean against State Mean, including Participation

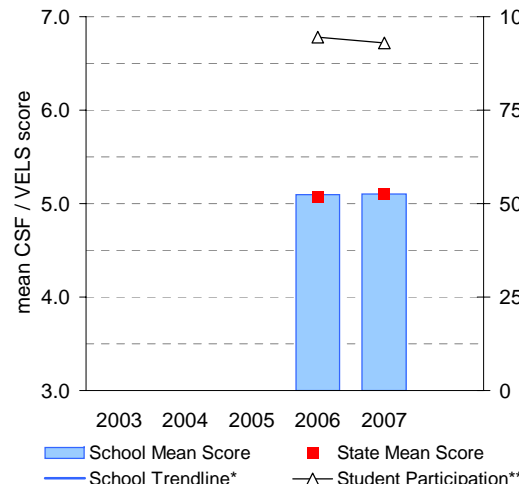


School Mean as percentile against SFO percentile range

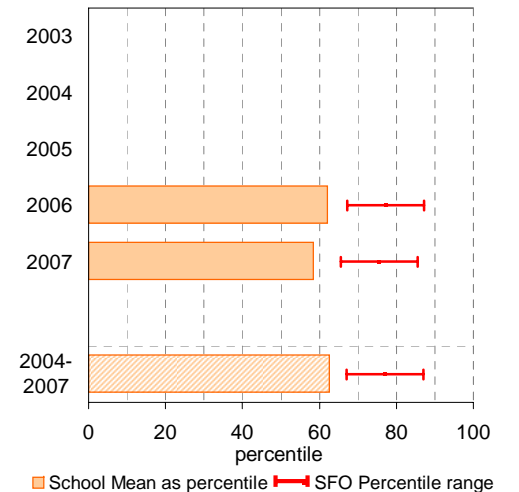


## Year 9

School Mean against State Mean, including Participation



School Mean as percentile against SFO percentile range



# AIM Year 7 and 9: Mathematics

School no: 8350

School name: Sunbury College

Source of data: Victorian Curriculum and Assessment Authority.

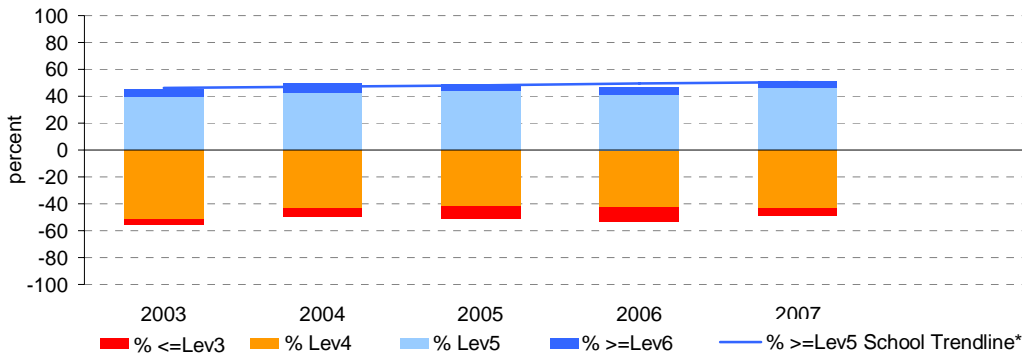
Explanation: The Achievement Improvement Monitor (AIM) was a statewide assessment program conducted each year up until and including 2007 for students in Years 3, 5, 7 and 9. This has now been replaced by NAPLAN. For more detailed AIM data, refer to the AIM Data Service website at <http://aimds.vcaa.vic.edu.au>.

Notes: \* The school trendline is only plotted when there is data for each calendar year.  
 \*\* % student participation = (students who participated in AIM / Feb enrolments) \* 100

## Year 7

	student participation		Percent of students by VELs level							Mean CSF / VELs Score	
	(n)	(%)**	Lev1	Lev2	Lev3	Lev4	Lev5	Lev6	Lev6E	School	State
2003	231	95	0	0	4	52	39	5	0	4.0	4.0
2004	213	100	0	0	7	43	43	7	0	4.0	4.0
2005	254	95	0	0	9	41	44	5	0	4.0	4.0
2006	246	97	0	0	11	42	41	6	0	3.9	4.0
2007	258	99	0	0	5	43	46	5	0	4.0	4.1

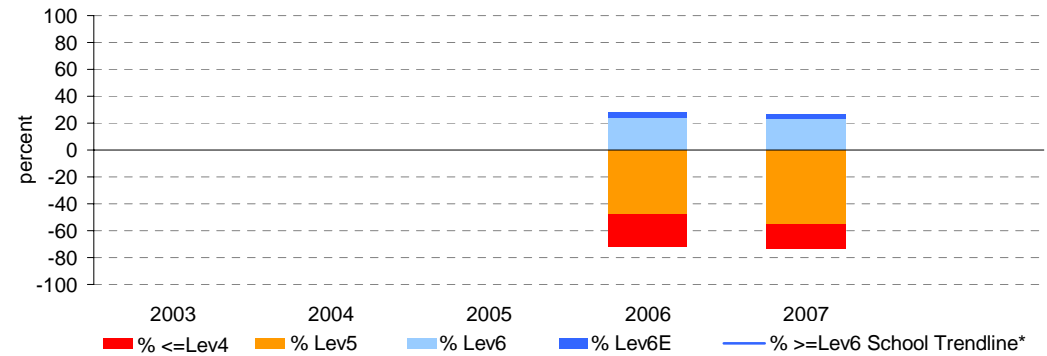
Percent of students by VELs level



## Year 9

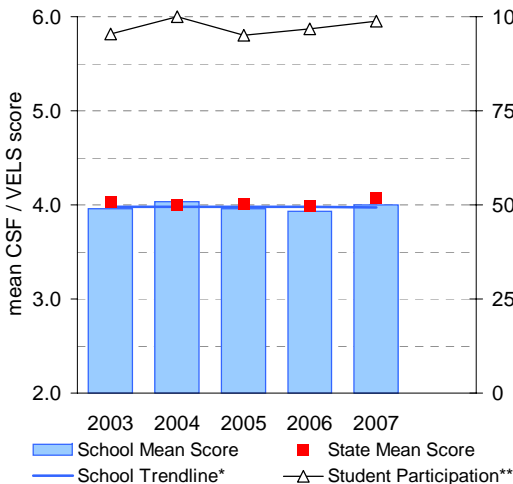
	student participation		Percent of students by VELs level							Mean CSF / VELs Score	
	(n)	(%)**	Lev1	Lev2	Lev3	Lev4	Lev5	Lev6	Lev6E	School	State
2003											
2004											
2005											
2006	198	91	0	0	0	24	47	24	5	4.7	4.8
2007	259	95	0	0	0	19	55	24	3	4.7	4.8

Percent of students by VELs level

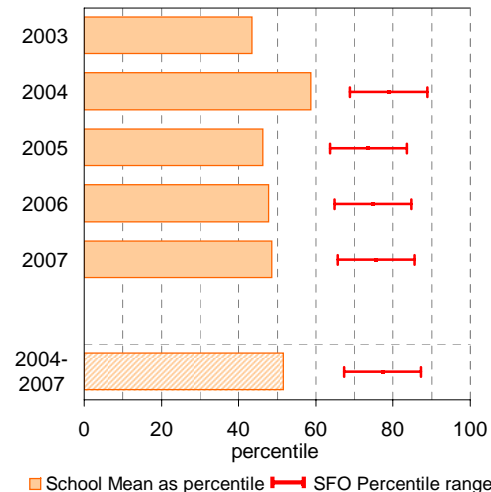


## Year 7

School Mean against State Mean, including Participation

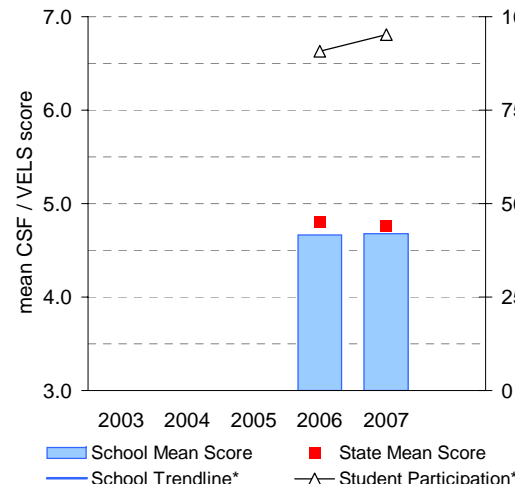


School Mean as percentile against SFO percentile range

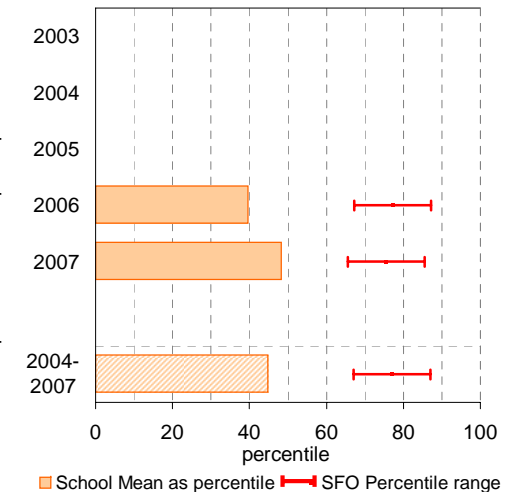


## Year 9

School Mean against State Mean, including Participation



School Mean as percentile against SFO percentile range



# VCE

**School no:** 8350

**School name:** Sunbury College

**Explanation:** Only 2008 studies, which at least 1 student completed, are included.

**Source of data:** Victorian Curriculum and Assessment Authority.

Notes:	2004		2005		2006		2007		2008	
- After allstudy, English, Further Maths and Maths Methods, studies are listed in descending order of the number of students in the latest year.	No. of students	school mean	No. of students	school mean	No. of students	school mean	No. of students	school mean	No. of students	school mean
- From 2005, VET study scores are included.										
- From 2005, data is based on 'reported' study scores, not 'achieved' study scores.										
allstudy		28.2		28.1		27.9		28.2		27.2
English EN01	136	29.1	120	28.6	132	28.6	96	29.7	140	27.4
Further Mathematics MA07	84	26.5	73	25.2	73	26.0	65	26.6	99	25.1
Mathematical Methods MA08	25	26.5	27	26.4	46	24.1	28	25.4	43	26.1
Health & Human Dev. HH03	50	29.9	55	26.0	46	28.6	36	27.7	55	29.0
Psychology PY03	35	27.9	34	27.4	25	27.5	41	29.3	49	26.9
Business Management BM03	32	30.0	54	30.6	33	30.9	41	30.5	42	29.1
Physical Ed. PE03	37	29.5	33	28.8	36	28.8	35	28.9	34	26.6
Biology BI03	38	27.4	31	26.9	28	29.0	19	27.7	30	26.5
Legal Studies LS03	21	27.4	22	30.6	12	28.3	27	30.9	28	28.8
English Language EL01							26	23.6	26	24.7
Chemistry CH03	14	27.1	9	29.4	14	27.9	9	26.6	23	26.1
Multimedia (VCE VET) MU02					10	26.6			22	28.3
National Politics NP03					14	27.6	15	27.1	22	26.4
Literature LI01	23	28.5	18	30.5	13	30.1	23	27.9	21	28.6
History (Revolutions) HI13	18	24.1	25	25.8	18	26.1	41	27.0	20	28.2
Studio Arts SA03	24	26.6	15	29.3	17	27.0	25	26.0	19	26.9
Accounting AC03	19	28.7	15	30.6	23	29.9	13	32.0	17	29.4
Australian History HI08	24	26.6	18	26.9					17	24.4
Design & Tech. DT03	12	31.6	8	30.0	22	32.7	11	29.5	17	31.6
Geography GE03	18	27.6			13	27.0			17	24.6
IT Applications IT02	30	28.4	19	29.3	17	31.8	15	29.5	15	27.6
Physics PH03	8	29.3	9	28.9	13	27.2	13	29.1	14	26.2
Philosophy PL03	1	32.0	16	26.1	17	27.1			13	27.5
Software Development IT03	14	31.4	10	32.0					13	27.8
Economics EC03	9	32.8	14	30.1	21	32.3	9	32.2	12	31.7
Visual Communication & Design VC03	14	29.0	18	28.9	19	26.4	12	26.1	12	26.0
Food & Tech. FY03	12	28.0	12	30.8	12	27.9	10	26.9	11	27.6
Specialist Mathematics MA09	4	28.5	12	23.3	14	21.5	8	24.6	11	24.5
Media ME03			17	28.4			15	28.5	9	31.9
Systems Engineering SE03							7	31.1	9	31.9
Drama DR03							4	19.0	7	24.1
Japanese 2nd Language LO46	5	27.0	3	18.0	9	26.7	6	23.8	7	25.7
Music Performance: Solo MC02	1	30.0	1	31.0	5	26.2	4	25.5	7	23.6
Dance DA03			6	25.5	7	22.0	4	30.8	2	29.0
Chinese 1st Language LO04					1	30.0			1	32.0
Croatian LO05									1	34.0
Hospitality (Food & Bev.) (VCE VET) HS06			7	35.4	3	30.3	3	27.0	1	41.0
Vietnamese LO31			1	31.0					1	22.0

# VCE

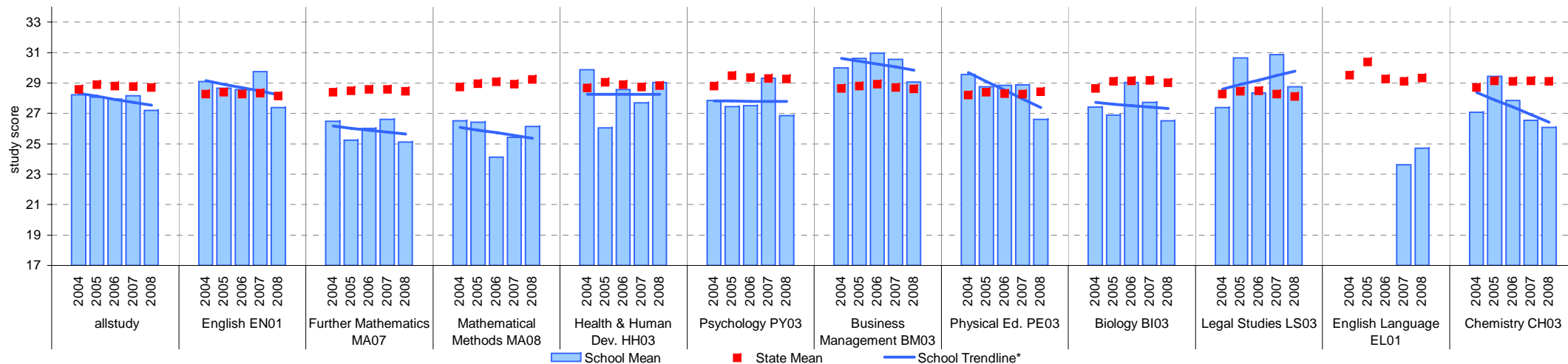
School no: 8350

School name: Sunbury College

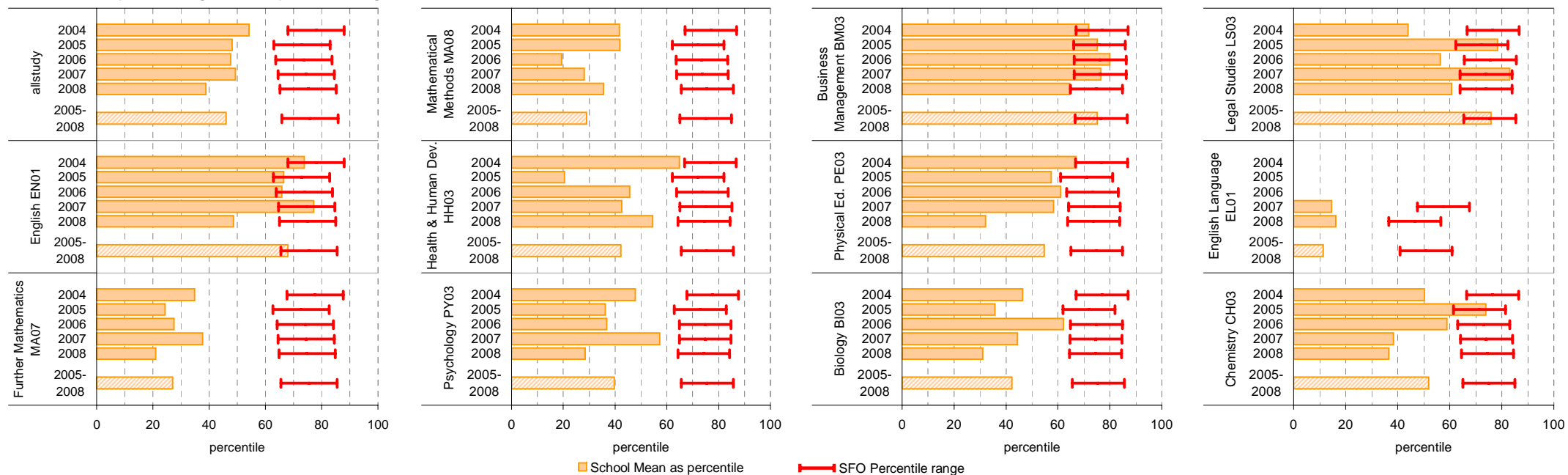
Source of data: Victorian Curriculum and Assessment Authority.

School Mean against State Mean

- Notes:
- \* The school trendline is only plotted when there is data for each calendar year.
  - After allstudy, EN01, MA07 and MA08, the remaining studies are charted in order of the number of students who completed that study in 2008, from highest to lowest.
  - From 2005, VET study scores are included.
  - From 2005, data is based on 'reported' study scores, not the 'achieved' study scores.
  - Only the results of the 32 studies with the most students (apart from EN01, MA07 and MA08) are charted.



## School Mean as percentile against SFO percentile range



# VCE (cont'd)

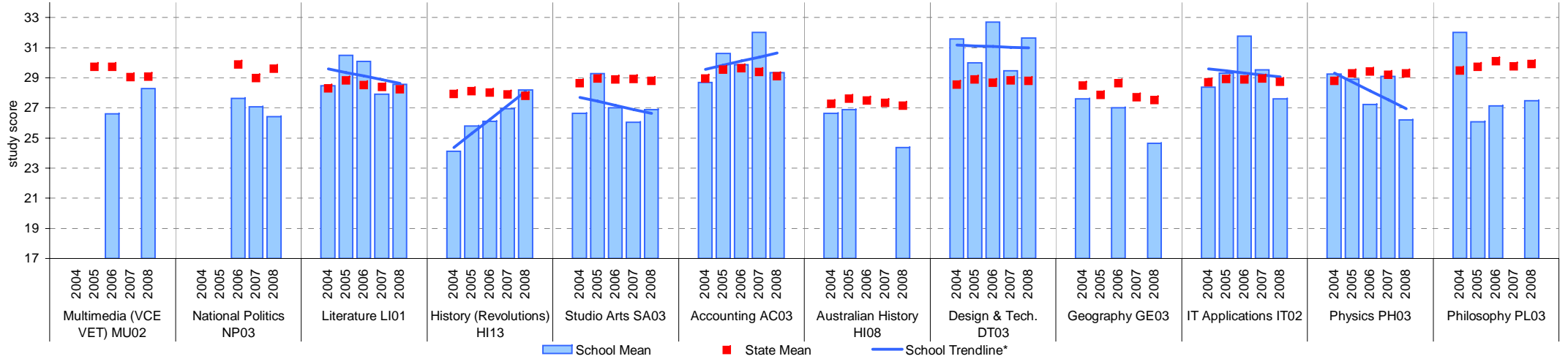
School no: 8350

School name: Sunbury College

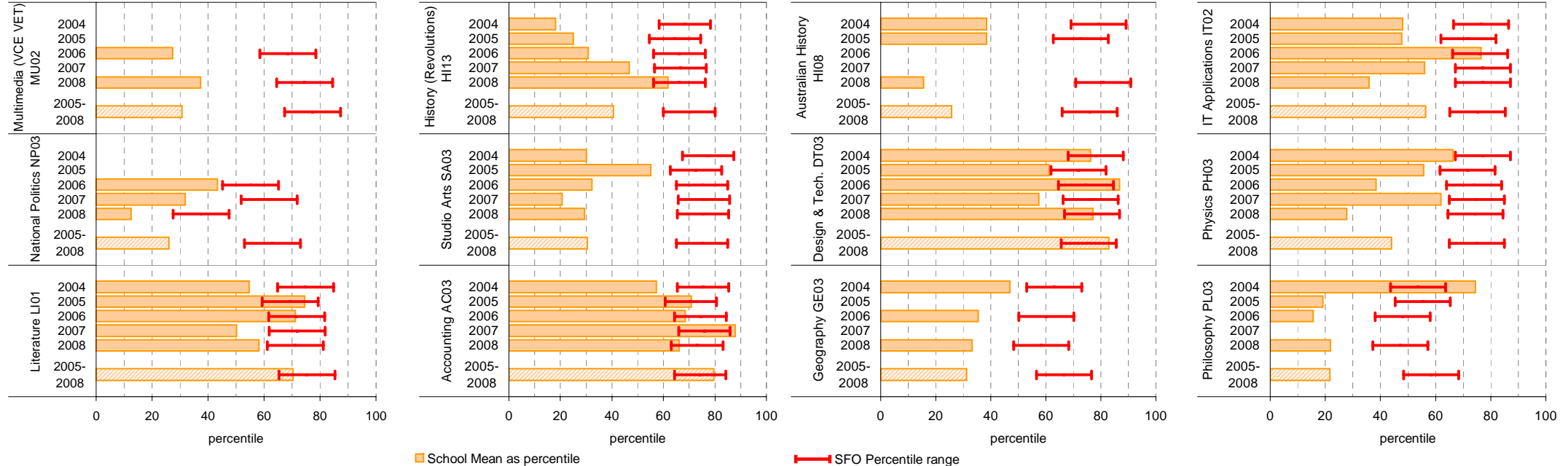
Source of data: Victorian Curriculum and Assessment Authority.

School Mean against State Mean

- Notes:
- \* The school trendline is only plotted when there is data for each calendar year.
  - After allstudy, EN01, MA07 and MA08, the remaining studies are charted in order of the number of students who completed that study in 2008, from highest to lowest.
  - From 2005, VET study scores are included.
  - From 2005, data is based on 'reported' study scores, not the 'achieved' study scores.
  - Only the results of the 32 studies with the most students (apart from EN01, MA07 and MA08) are charted.



## School Mean as percentile against SFO percentile range



# VCE (cont'd)

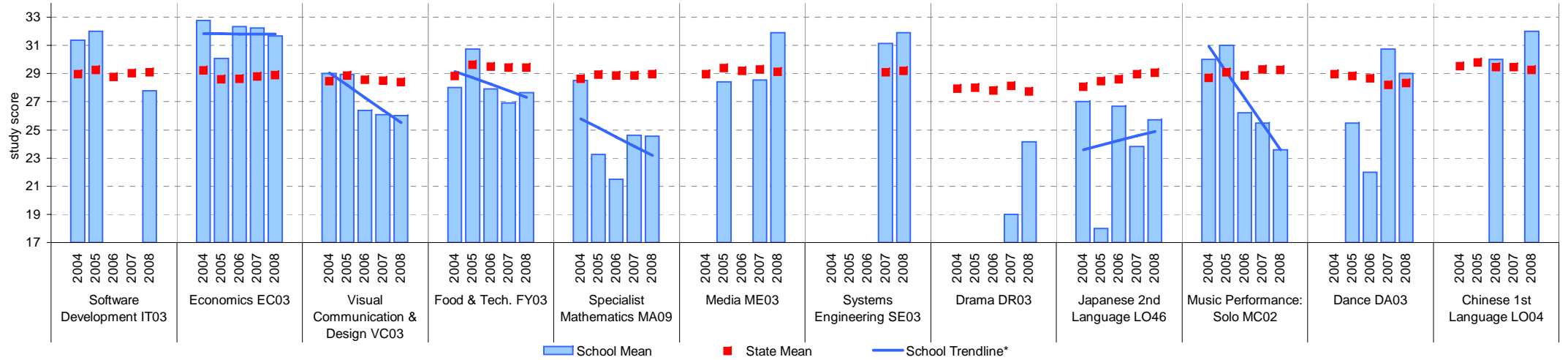
School no: 8350

School name: Sunbury College

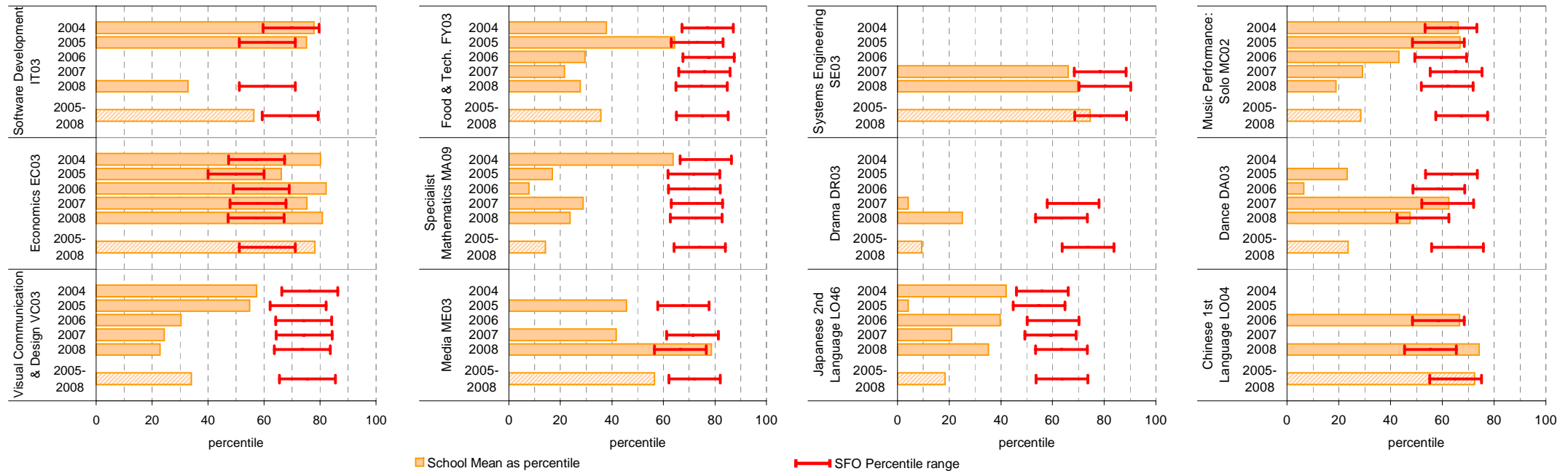
Source of data: Victorian Curriculum and Assessment Authority.

School Mean against State Mean

- Notes:
- \* The school trendline is only plotted when there is data for each calendar year.
  - After allstudy, EN01, MA07 and MA08, the remaining studies are charted in order of the number of students who completed that study in 2008, from highest to lowest.
  - From 2005, VET study scores are included.
  - From 2005, data is based on 'reported' study scores, not the 'achieved' study scores.
  - Only the results of the 32 studies with the most students (apart from EN01, MA07 and MA08) are charted.



## School Mean as percentile against SFO percentile range

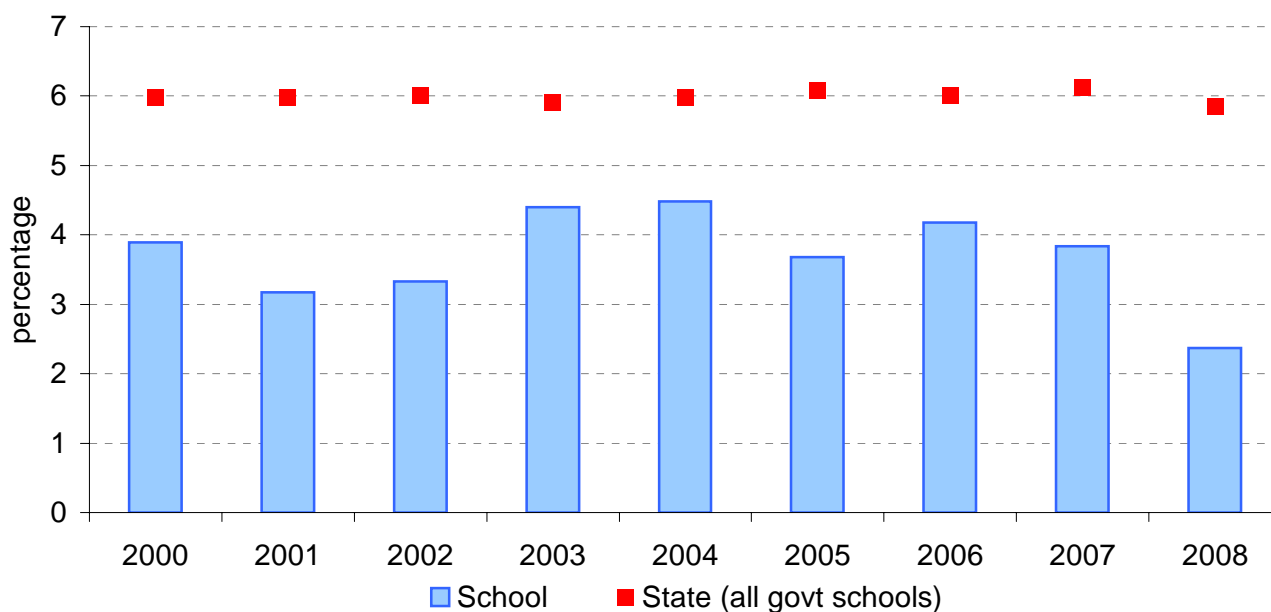


## VCE: Study Scores of 40 or more

<b>School no:</b>	<b>8350</b>
<b>School name:</b>	<b>Sunbury College</b>
<b>Explanation:</b>	Of all VCE study scores, the percentage that were 40 or more.
<b>Source of data:</b>	Victorian Curriculum and Assessment Authority.

Year	School		State (all govt schools)
	Total study scores	% 40 or more*	% 40 or more
2000	643	3.9	6.0
2001	756	3.2	6.0
2002	841	3.3	6.0
2003	705	4.4	5.9
2004	714	4.5	6.0
2005	706	3.7	6.1
2006	718	4.2	6.0
2007	677	3.8	6.1
2008	887	2.4	5.9

VCE percentage of study scores of 40 or more\*, 2000 to 2008



**Note:**

- \* Prior to 2005, this data may not match the information published in *The Age*. Data presented on this page prior to 2005 does not include study scores from the small number of VET studies that are given study scores.
- From 2005, VET study scores are included.
- From 2005, data is based on 'reported' study scores, not 'achieved' study scores.

# VET

**School no:** 8350  
**School name:** Sunbury College  
**Source of data:** Victorian Curriculum and Assessment Authority.

Notes: \* - The school trendline is only plotted when there is data for each calendar year.

1 - UOC = Unit(s) of Competence.

2 - % students based on yr10, 11 & 12 August enrolments.

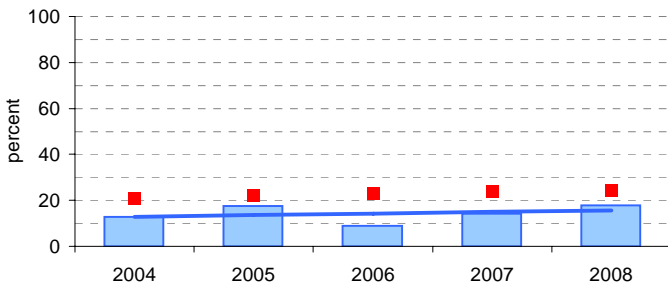
3 - Only includes students undertaking at least 1 UOC.

More detailed information is available on the VASS system provided by VCAA.

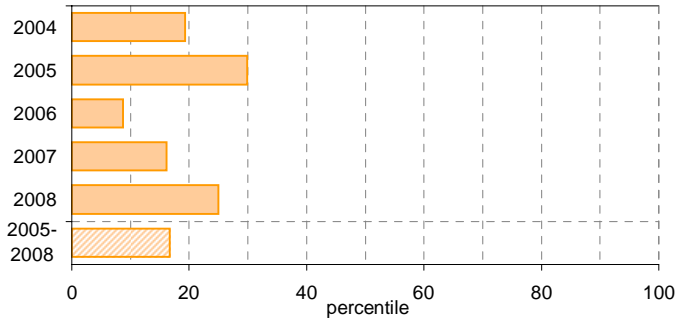
Participation						Completion			
School					State		School		State
Year	Level	No. students undertaking at least 1 UOC <sup>1</sup>	% students <sup>2</sup> undertaking at least 1 UOC <sup>1</sup>	Avg no. UOCs <sup>1</sup> undertaken per student <sup>3</sup>	% students <sup>2</sup> undertaking at least 1 UOC <sup>1</sup>	Avg no. UOCs <sup>1</sup> undertaken per student <sup>3</sup>	No. UOCs <sup>1</sup> with satisfactory result	% UOCs <sup>1</sup> with satisfactory result	% UOCs <sup>1</sup> with satisfactory result
2004	10	7	3.4	11	20.7	11.9	62	80.5	71.3
	11	38	21.5	14.2					
	12	23	15.1	9.4					
	10-12	68	12.7	12.2					
2005	10	18	9.2	8.3	22.3	11.9	96	64	72.6
	11	51	29	13.5					
	12	23	15.1	6					
	10-12	92	17.5	10.6					
2006	10	5	2.1	13.4	23.0	12.0	35	52.2	75.6
	11	18	10.9	9.6					
	12	25	17.3	12.6					
	10-12	48	8.8	11.5					
2007	10	6	2.6	9.3	23.8	11.7	56	100	76.4
	11	62	28.7	10					
	12	13	10.3	7.5					
	10-12	81	14.2	9.5					
2008	10	15	5.6	16.2	24.6	12.0	209	86	76.7
	11	60	32	12.3					
	12	38	21.7	12.9					
	10-12	113	17.9	13					

## Participation - % Yr10-12 students<sup>2</sup> undertaking at least 1 UOC<sup>1</sup>

### School against State

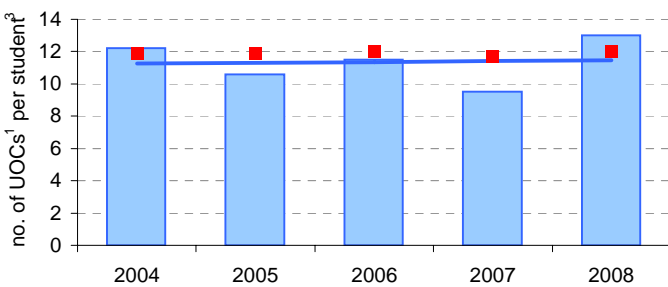


### School as percentile

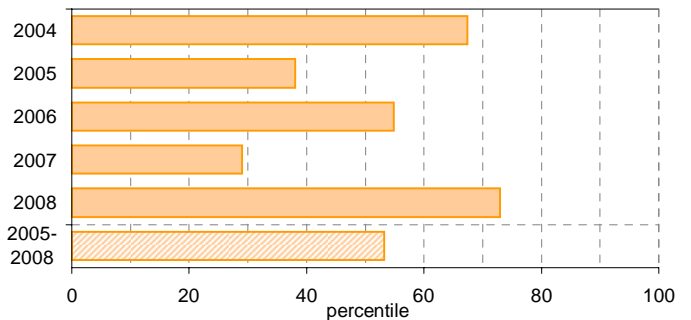


## Avg no. UOCs<sup>1</sup> undertaken per student<sup>3</sup>

### School Mean against State Mean

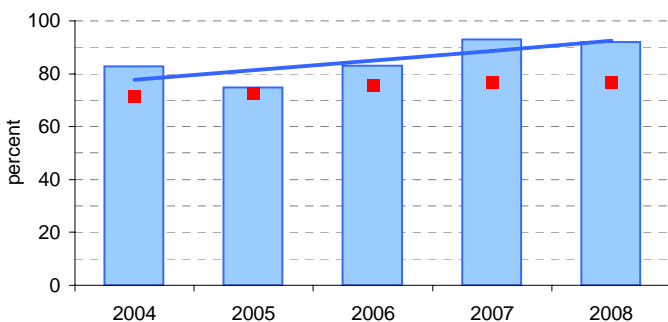


### School Mean as percentile

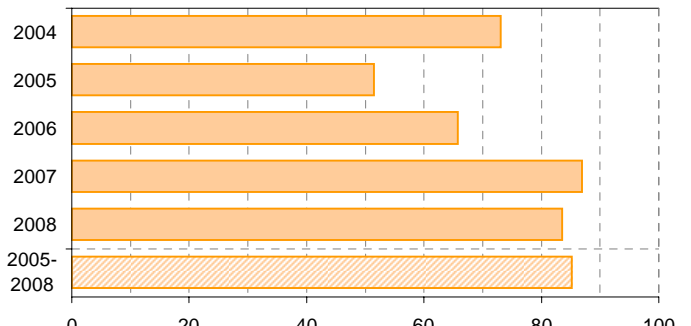


## Completion - % UOCs<sup>1</sup> with satisfactory result

### School against State



### School as percentile



# VCAL

**School no:** 8350  
**School name:** Sunbury College  
**Explanation:**

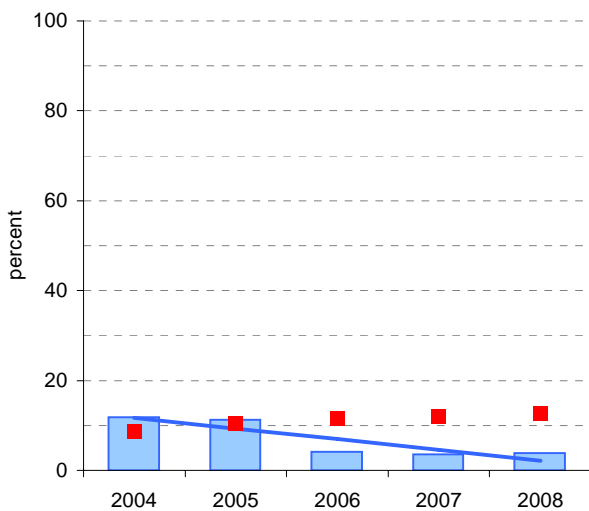
'No. of VCAL credits undertaken' is calculated by summing the number of credits undertaken by each VCAL student across all VCAL students.  
 The data contained in this page is for all VCAL strands and levels combined.

**Source of data:** Victorian Curriculum and Assessment Authority.  
 More detailed information is available on the VASS system provided by VCAA.

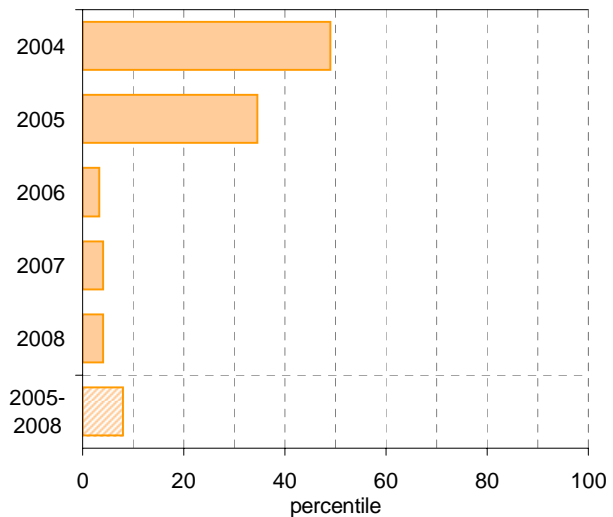
Notes: \* - The school trendline is only plotted when there is data for each calendar year.  
 1 - No. and % students based on yr11 & 12 August enrolments.

Participation						Completion		
		School		State		School		State
Year	Year Level	No. students <sup>1</sup>	No. students undertaking VCAL	% students <sup>1</sup> undertaking VCAL	% students <sup>1</sup> undertaking VCAL	No. VCAL unit credits undertaken	% satisfactory completion of VCAL credits	% satisfactory completion of VCAL credits
2004	11-12	328.8	39	11.9	8.6	233	65.2	70.4
2005	11-12	328.5	37	11.3	10.4	287	74.9	72.9
2006	11-12	309.5	13	4.2	11.5	91	79.1	77.7
2007	11-12	342	12	3.5	12.0	84	80.9	76.5
2008	11-12	363.1	14	3.9	12.7	60	88.3	75.8

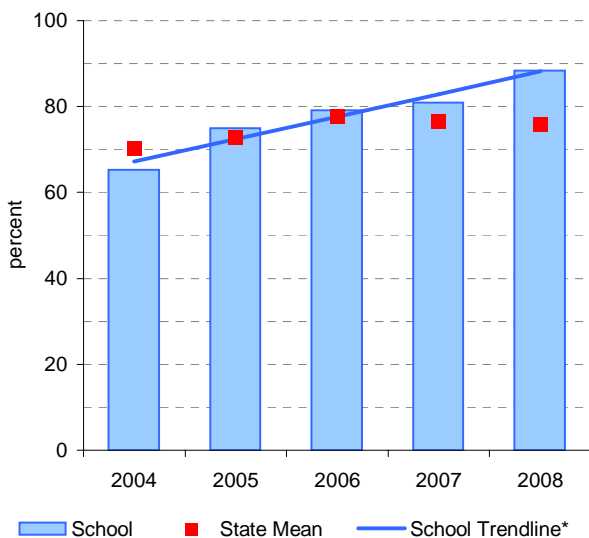
**Participation - % Yr11-12 students<sup>1</sup> undertaking VCAL School against State**



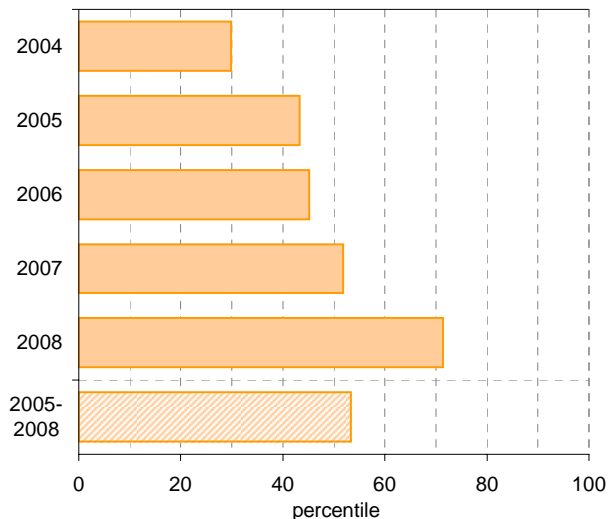
**School as percentile**



**Completion - % satisfactory completion of VCAL credits School against State**



**School as percentile**



■ School   
 ■ State Mean   
 — School Trendline\*   
  School as percentile

# Teacher Assessment of Student Progress (PSD students)

**School no:** 8350

**School name:** Sunbury College

**Explanation:** Teachers assess their students' progress against the 8 VELs Domains / CSF KLAs using a 6-point scale (students in special schools and those who cannot be assessed against the VELs / CSF).

**Source of data:** Data transmitted from school to DEECD via an online web-form.

	No progress (%)	Little progress (%)	Satisfactory progress (%)	Good progress (%)	Very good progress (%)	Excellent progress (%)	Total students assessed <sup>1</sup> (no.)
--	--------------------	---------------------------	---------------------------------	-------------------------	------------------------------	------------------------------	--

## 2004 (by CSF KLA)

English  
Mathematics  
Science  
Technology  
The Arts  
H&PE  
SOSE

## 2005 (by CSF KLA)

English  
Mathematics  
Science  
Technology  
The Arts  
H&PE  
SOSE

## 2006 (by VELs Domain)

English  
Mathematics  
Science  
ICT  
The Arts  
H&PE  
Civics & Citizenship

## 2007 (by VELs Domain)

English  
Mathematics  
Science  
ICT  
The Arts  
H&PE  
Civics & Citizenship

## 2008 (by VELs Domain)

English  
Mathematics  
Science  
ICT  
The Arts  
H&PE  
Civics & Citizenship

## 2007 Secondary state benchmarks (by VELs Domain)\*

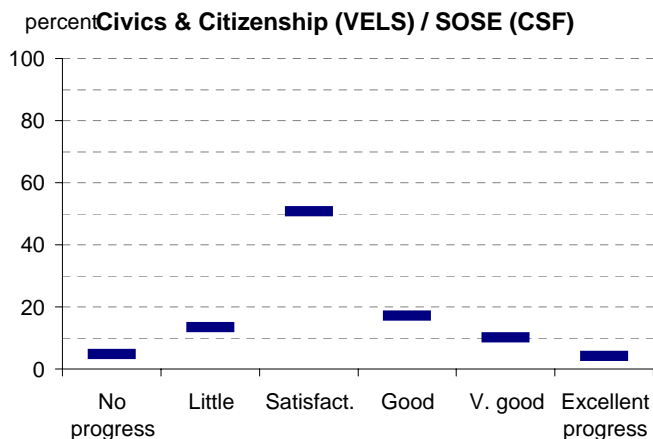
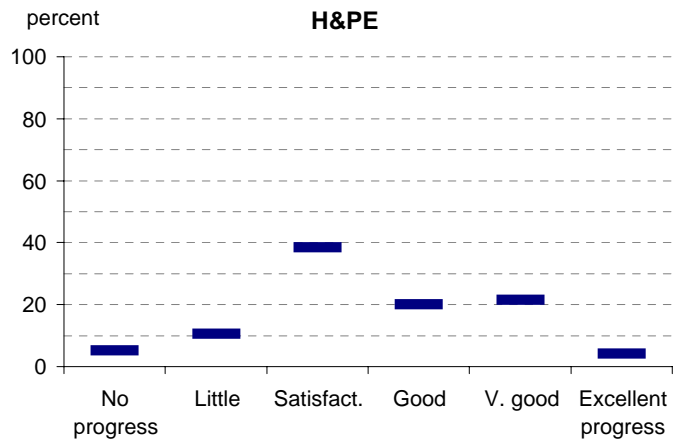
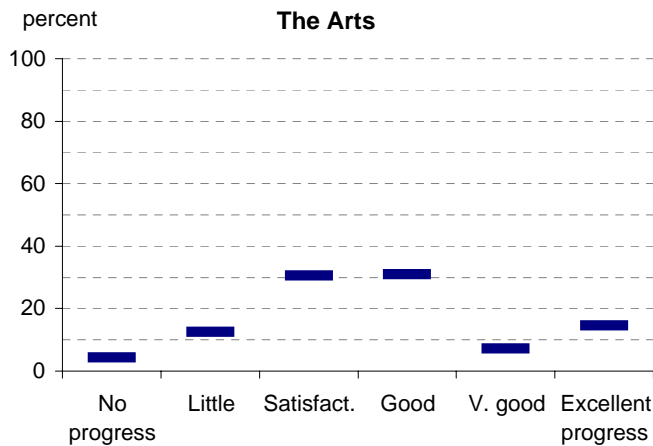
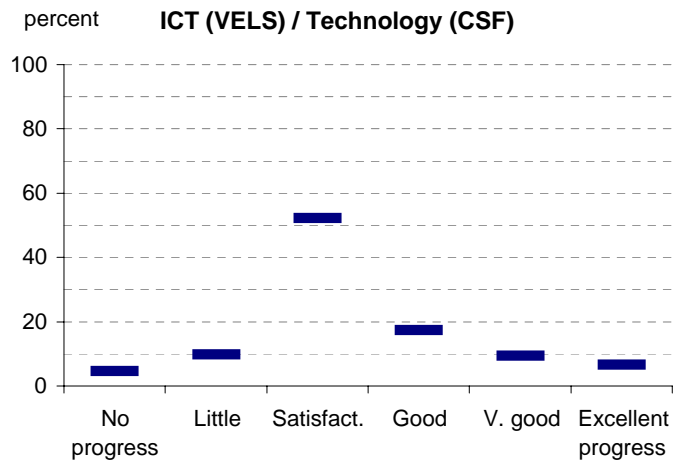
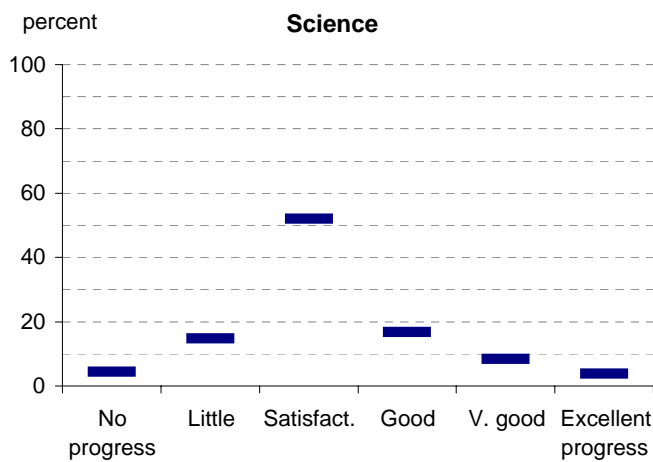
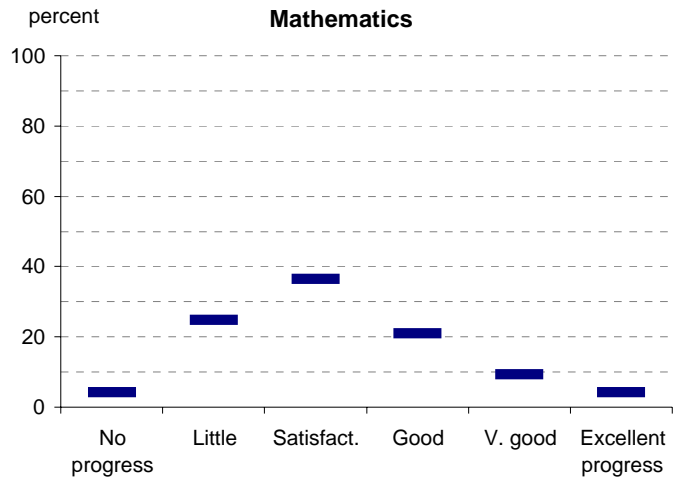
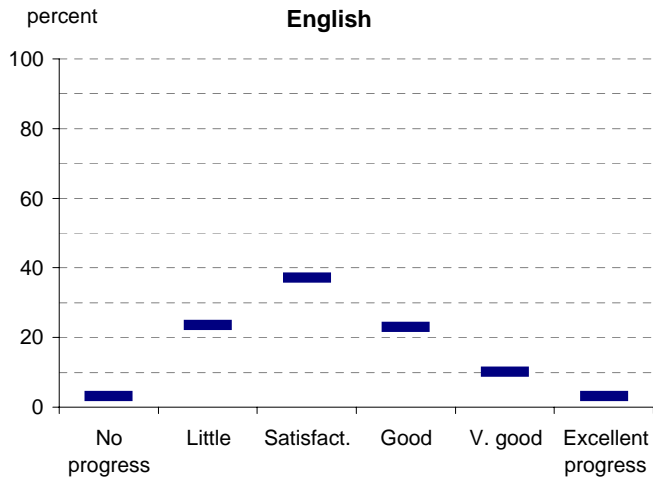
English	3	24	37	23	10	3
Mathematics	4	25	36	21	9	4
Science	4	15	52	17	8	4
ICT	5	10	52	17	9	7
The Arts	4	12	31	31	7	14
H&PE	5	11	39	20	21	4
Civics & Citizenship	5	13	51	17	10	4

Notes: <sup>1</sup> If schools provided percentages only, it is not possible to report the number of students assessed. In these cases, the total percentage (100) will be shown.

\* 2008 benchmarks will be calculated in August, when data from all schools has been submitted.

# Teacher Assessment of Student Progress (PSD students)

School no: 8350  
 School name: Sunbury College



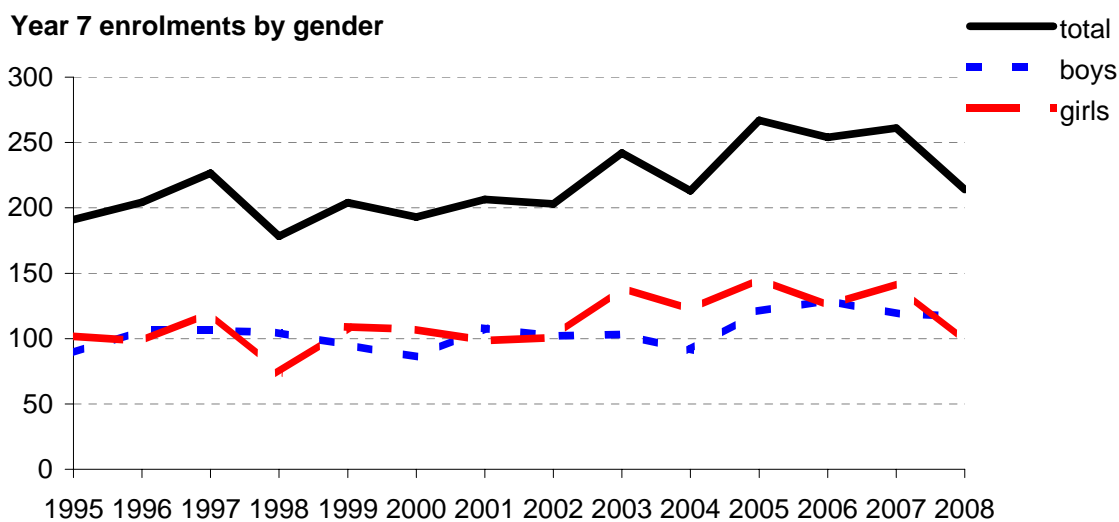
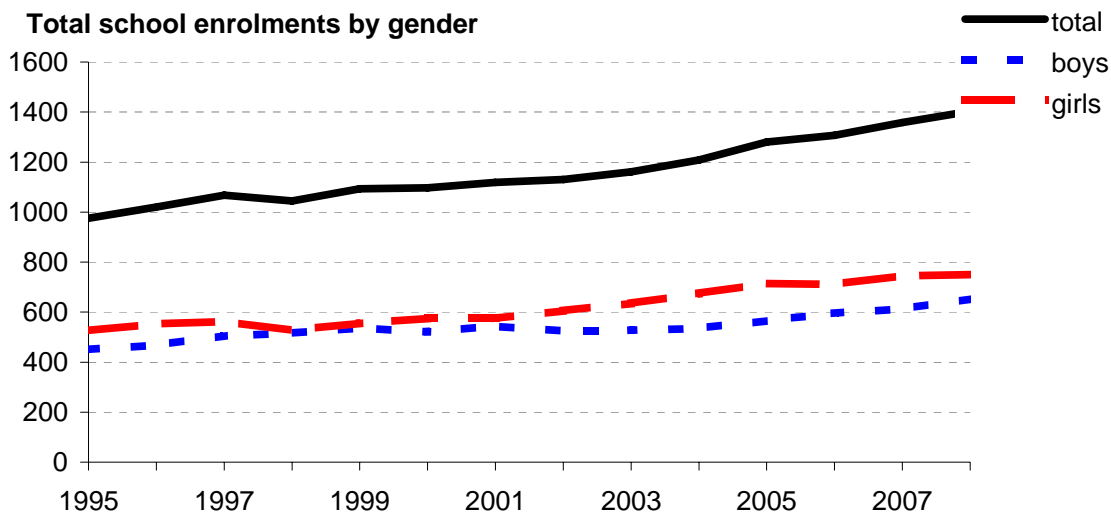
- 2004 (by CSF KLA)
- 2005 (by CSF KLA)
- 2006 (by VELS Domain)
- 2007 (by VELS Domain)
- 2008 (by VELS Domain)
- 2007 Secondary state benchmarks (by VELS Domain)\*

Notes: \* 2008 benchmarks will be calculated in August, when data from all schools has been submitted.

# Enrolments

**School no:** 8350  
**School name:** Sunbury College  
**Explanation:** Enrolments at February census.  
**Source of data:** February census.

Year	Total school enrolment			Prep enrolment			Year 7 enrolments		
	boys	girls	total	boys	girls	total	boys	girls	total
1995	450	526	976				89	102	191
1996	467	553	1020				106	98	204
1997	505	562	1067				106	120	227
1998	516	528	1044				105	74	178
1999	537	556	1093				95	109	204
2000	522	575	1097				86	107	193
2001	543	575	1118				108	98	206
2002	525	605	1130				102	101	203
2003	527	634	1161				103	139	242
2004	535	674	1209				91	122	213
2005	566	715	1280				121	146	267
2006	595	712	1306				129	125	254
2007	613	745	1358				119	142	261
2008	653	750	1403				117	97	214



# Apparent Student Retention

Note: \* The school trendline is only plotted when there is data for each calendar year.

School no: 8350

School name: Sunbury College

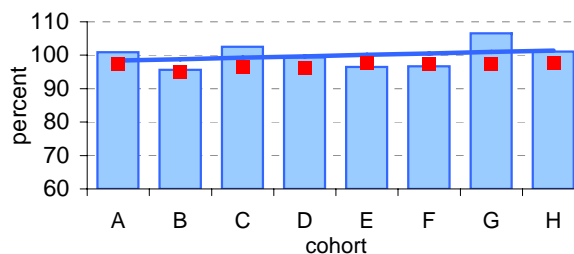
Explanation: Apparent retention rates are based on enrolments. For example, Year 7Feb-12Aug apparent retention refers to year 12 enrolment of students in full-time school education in August expressed as a percentage of year 7 enrolments in February five years earlier.

Source of data: February and August census.

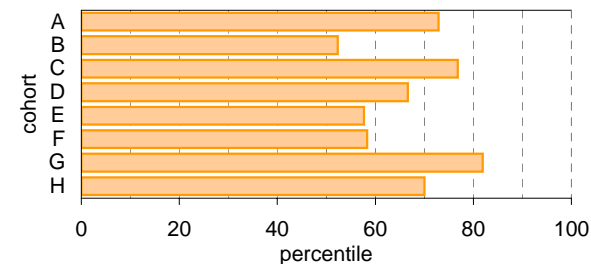
## Year 7 (Feb) - 10 (Aug)

	Cohorts:	A	B	C	D	E	F	G	H
Year 7		1998	1999	2000	2001	2002	2003	2004	2005
Year 10		2001	2002	2003	2004	2005	2006	2007	2008
Year 7 (Feb)	no.	178.2	204	193	206.4	203	242	213	267
Year 10 (Aug)	no.	179.8	195	197.9	205	195.9	234	227	269.9
Year 7 (Feb) - 10 (Aug)	%	100.9	95.6	102.5	99.3	96.5	96.7	106.6	101.1
State mean	%	97.3	95.0	96.6	96.3	97.6	97.3	97.4	97.6

### School against State

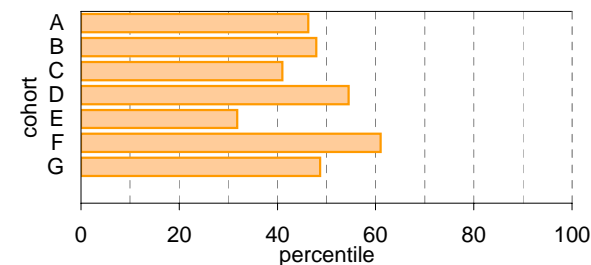
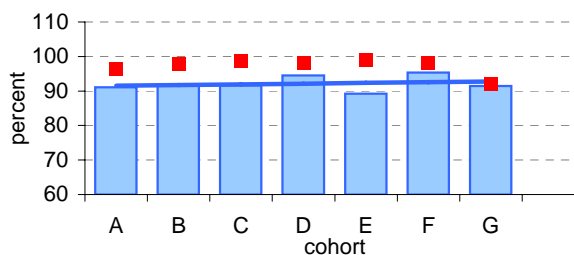


### School as percentile



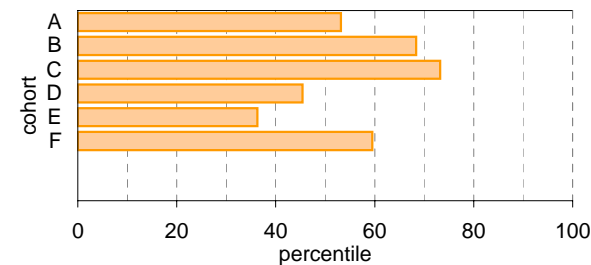
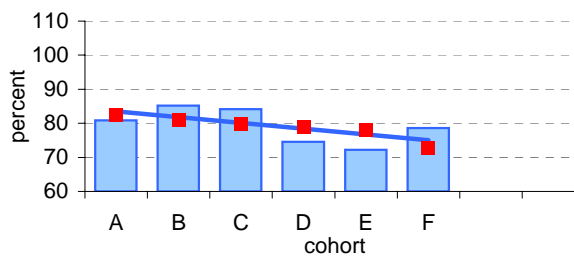
## Year 10 (Aug) - 11 (Feb)

	Cohorts:	A	B	C	D	E	F	G
Year 10		2001	2002	2003	2004	2005	2006	2007
Year 11		2002	2003	2004	2005	2006	2007	2008
Year 10 (Aug)	no.	179.8	195	197.9	205	195.9	234	227
Year 11 (Feb)	no.	163.8	178.9	181.4	193.8	174.7	223	207.6
Year 10 (Aug) - 11 (Feb)	%	91.1	91.7	91.7	94.5	89.2	95.3	91.5
State mean	%	96.2	97.7	98.7	98.2	99.0	98.2	92.0



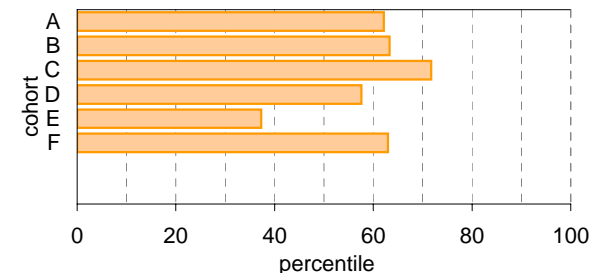
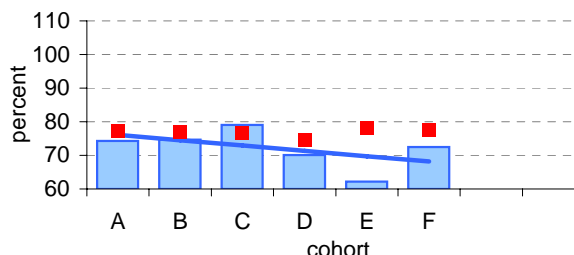
## Year 11 (Feb) - 12 (Aug)

	Cohorts:	A	B	C	D	E	F
Year 11		2002	2003	2004	2005	2006	2007
Year 12		2003	2004	2005	2006	2007	2008
Year 11 (Feb)	no.	163.8	178.9	181.4	193.8	174.7	223
Year 12 (Aug)	no.	132.4	152.4	152.6	144.6	126.2	175.4
Year 11 (Feb) - 12 (Aug)	%	80.8	85.2	84.1	74.6	72.2	78.7
State mean	%	82.5	81.0	79.8	78.8	78.1	72.7



## Year 7 (Feb) - 12 (Aug)

	Cohorts:	A	B	C	D	E	F
Year 7		1998	1999	2000	2001	2002	2003
Year 12		2003	2004	2005	2006	2007	2008
Year 7 (Feb)	no.	178.2	204	193	206.4	203	242
Year 12 (Aug)	no.	132.4	152.4	152.6	144.6	126.2	175.4
Year 7 (Feb) - 12 (Aug)	%	74.3	74.7	79.1	70.1	62.2	72.5
State mean	%	77.2	76.9	76.8	74.6	78.2	77.5



Legend: School (blue bar), State Mean (red square), School Trendline\* (blue line)

School as percentile (orange bar)

# Real Student Retention

**School no:** 8350  
**School name:** Sunbury College  
**Explanation:** Real retention rates show the percentage of students who have been enrolled at the same school over a period of time.

Notes: \* The school trendline is only plotted when there is data for each calendar year.  
 ^ 2008 benchmarks will be calculated in August, when data from all schools has been submitted.

For example, the formula for the real retention rate for Year 7Feb to 10Aug for school X in 2008 is as follows:

$$\frac{\text{(no. of students enrolled in Yr10 in school X as at August 2008 census and who enrolled prior to 1/3/2005, ie, enrolled in school X at beginning of Yr7)}}{\text{(enrolments in Yr7 Feb in 2005 according to census)}}$$

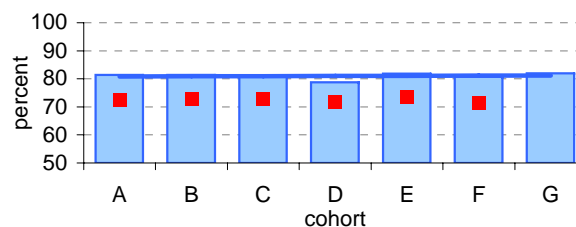
By definition, real school retention will be less than or equal to 100% (assuming there are no students repeating the year, or accelerating through years). Generally, real school retention rates are affected by students transferring to another school & students exiting the school system. They are a measure of the 'holding power' of the school.

**Source of data:** Data retrieved electronically from CASES21 at time of rollover.

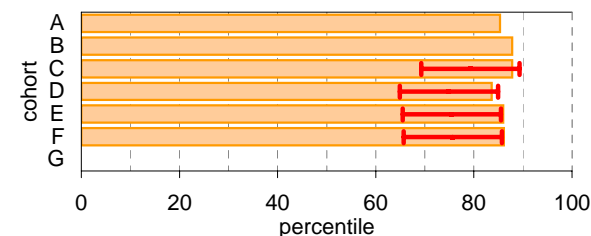
## Year 7 (Feb) - 10 (Aug)

	Cohorts:	A	B	C	D	E	F	G
Year 7		1999	2000	2001	2002	2003	2004	2005
Year 10		2002	2003	2004	2005	2006	2007	2008
Year 7 (Feb)	no.	204	193	206.4	203	242	213	267
Year 10 (Aug)	no.	166	157	167	160	198	172	218.9
Year 7 (Feb) - 10 (Aug)	%	81.4	81.3	80.9	78.8	81.8	80.8	82.0
State mean^	%	72.5	72.7	72.8	71.7	73.5	71.5	

School against State^

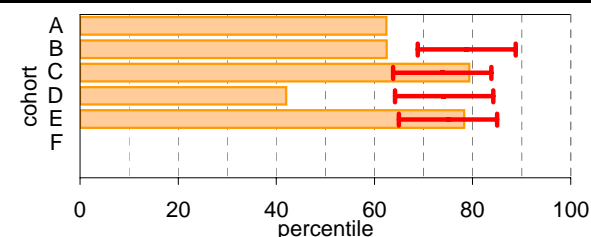
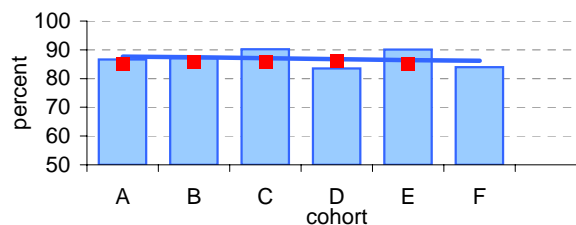


School as percentile against SFO percentile range^



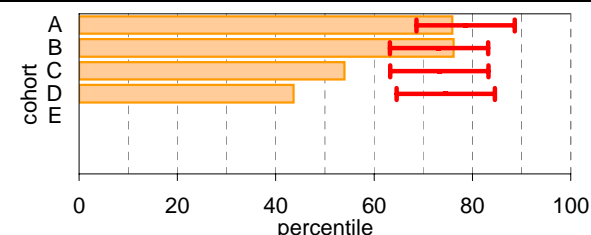
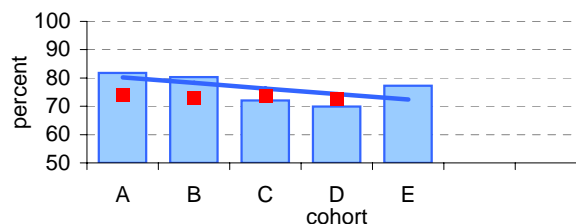
## Year 10 (Aug) - 11 (Feb)

	Cohorts:	A	B	C	D	E	F
Year 10		2002	2003	2004	2005	2006	2007
Year 11		2003	2004	2005	2006	2007	2008
Year 10 (Aug)	no.	195	197.9	205	195.9	234	227
Year 11 (Feb)	no.	168.9	172.4	184.8	163.7	210.8	190.7
Year 10 (Aug) - 11 (Feb)	%	86.6	87.1	90.1	83.6	90.1	84.0
State mean^	%	84.9	85.9	85.9	86.1	85.1	



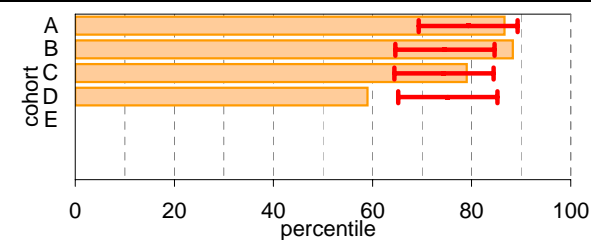
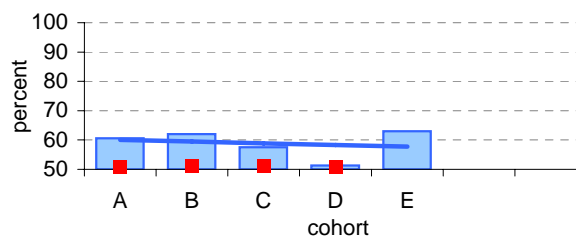
## Year 11 (Feb) - 12 (Aug)

	Cohorts:	A	B	C	D	E
Year 11		2003	2004	2005	2006	2007
Year 12		2004	2005	2006	2007	2008
Year 11 (Feb)	no.	178.9	181.4	193.8	174.7	223
Year 12 (Aug)	no.	146.4	145.6	139.7	122.2	172.4
Year 11 (Feb) - 12 (Aug)	%	81.8	80.3	72.1	69.9	77.3
State mean^	%	73.9	73.0	73.5	72.5	



## Year 7 (Feb) - 12 (Aug)

	Cohorts:	A	B	C	D	E
Year 7		1999	2000	2001	2002	2003
Year 12		2004	2005	2006	2007	2008
Year 7 (Feb)	no.	204	193	206.4	203	242
Year 12 (Aug)	no.	123.5	119.6	118.8	104.2	152.4
Year 7 (Feb) - 12 (Aug)	%	60.5	62.0	57.6	51.3	63.0
State mean^	%	50.6	51.0	51.1	50.8	



Legend: School (blue bar), State Mean (red square), School Trendline\* (blue line)

Legend: School as percentile (orange bar), SFO Percentile range (red error bar)

# Exit Destination: Year 10

School no: 8350

School name: Sunbury College

Explanation: The destination of students who left during or at the end of Year 10.

Source of data: Data retrieved electronically from CASES21 following February census.

Exit Destination	2004		2005		2006		2007		2008		2007 state <sup>^</sup>
	n	%	n	%	n	%	n	%	n	%	%
<b>Continuing education and training</b>											
Government School	4	12.5	4	8.7	7	21.2	10	25.6	5	8.2	42.5
Non-Government School			2	4.3	1	3.0	2	5.1	2	3.3	6.0
University											0.1
Other Training Provider							1	2.6	10	16.4	3.3
TAFE / RTO / ACE							4	10.3	12	19.7	11.7
Apprenticeship / Traineeship							5	12.8	8	13.1	6.4
Home Schooling											0.4
Deferred											0.0
<b>(ceased in 2007)</b>											
School (non Victorian)	6	18.8	2	4.3	2	6.1					
TAFE	6	18.8	14	30.4	11	33.3					
Private Registered Training Organisation					1	3.0					
Adult and Community Education Organisation											
<b>SUBTOTAL</b>	<b>16</b>	<b>50.0</b>	<b>22</b>	<b>47.8</b>	<b>22</b>	<b>66.7</b>	<b>22</b>	<b>56.4</b>	<b>37</b>	<b>60.7</b>	<b>70.5</b>
<b>Not continuing education and training</b>											
Employed (part time)	3	9.4	2	4.3	3	9.1	1	2.6	3	4.9	1.7
Employed (full time)	7	21.9	13	28.3	4	12.1	11	28.2	10	16.4	6.5
Unemployed (seeking work)	5	15.6	3	6.5	2	6.1	2	5.1	10	16.4	4.8
Unemployed (not seeking work) <sup>†</sup>			2	4.3	1	3.0	2	5.1			1.3
<b>SUBTOTAL</b>	<b>15</b>	<b>46.9</b>	<b>20</b>	<b>43.5</b>	<b>10</b>	<b>30.3</b>	<b>16</b>	<b>41.0</b>	<b>23</b>	<b>37.7</b>	<b>14.3</b>
<b>Unknown</b>	<b>1</b>	<b>3.1</b>	<b>4</b>	<b>8.7</b>	<b>1</b>	<b>3.0</b>	<b>1</b>	<b>2.6</b>	<b>1</b>	<b>1.6</b>	<b>15.2</b>
<b>TOTAL</b>	<b>32</b>	<b>100.0</b>	<b>46</b>	<b>100.0</b>	<b>33</b>	<b>100.0</b>	<b>39</b>	<b>100.0</b>	<b>61</b>	<b>100.0</b>	<b>100.0</b>

Total Yr 10 February enrolment

208

203

240

219

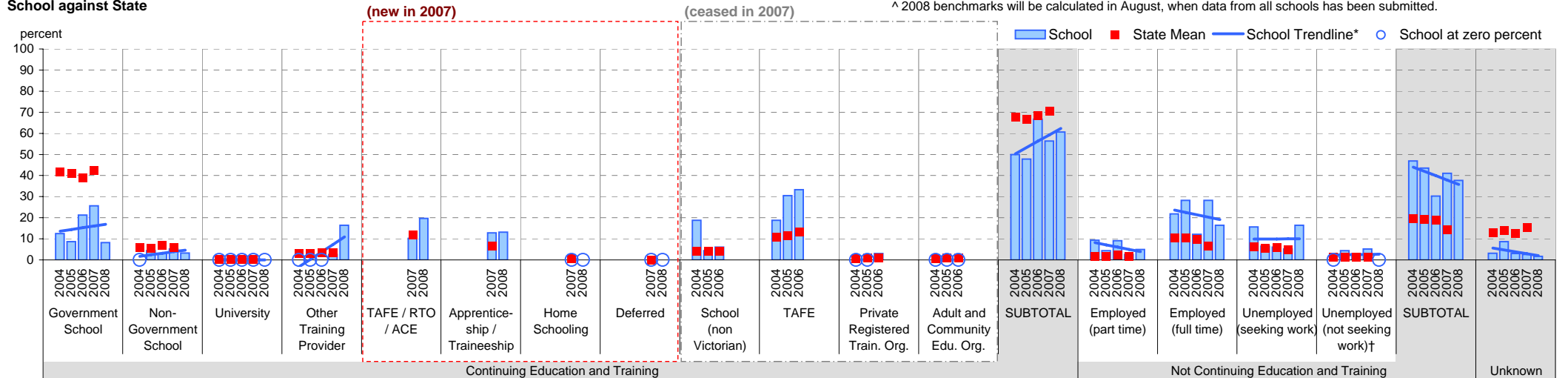
281

Notes: \* The school trendline is being trialled. It is only plotted when there is data for each calendar year.

† Includes deceased students.

^ 2008 benchmarks will be calculated in August, when data from all schools has been submitted.

## School against State



# Exit Destination: Year 11

School no: 8350

School name: Sunbury College

Explanation: The destination of students who left during or at the end of Year 11.

Source of data: Data retrieved electronically from CASES21 following February census.

Exit Destination	2004		2005		2006		2007		2008		2007 state <sup>^</sup>
	n	%	n	%	n	%	n	%	n	%	%
<b>Continuing education and training</b>											
Government School	3	9.4	3	6.0	4	7.7	4	8.9	5	8.3	18.6
Non-Government School			1	2.0	2	3.8			1	1.7	4.4
University											0.3
Other Training Provider			1	2.0			1	2.2	4	6.7	4.3
<b>(new in 2007)</b> TAFE / RTO / ACE							6	13.3	16	26.7	15.0
Apprenticeship / Traineeship							6	13.3	11	18.3	10.7
Home Schooling											0.4
Deferred									1	1.7	0.0
<b>(ceased in 2007)</b> School (non Victorian)					2	3.8					
TAFE	6	18.8	10	20.0	12	23.1					
Private Registered Training Organisation											
Adult and Community Education Organisation											
<b>SUBTOTAL</b>	<b>9</b>	<b>28.1</b>	<b>15</b>	<b>30.0</b>	<b>20</b>	<b>38.5</b>	<b>17</b>	<b>37.8</b>	<b>38</b>	<b>63.3</b>	<b>53.9</b>
<b>Not continuing education and training</b>											
Employed (part time)	3	9.4	10	20.0	9	17.3	6	13.3	3	5.0	4.1
Employed (full time)	11	34.4	14	28.0	13	25.0	7	15.6	11	18.3	13.7
Unemployed (seeking work)	8	25.0	6	12.0	6	11.5	10	22.2	4	6.7	9.1
Unemployed (not seeking work) <sup>†</sup>			1	2.0	4	7.7	2	4.4			1.8
<b>SUBTOTAL</b>	<b>22</b>	<b>68.8</b>	<b>31</b>	<b>62.0</b>	<b>32</b>	<b>61.5</b>	<b>25</b>	<b>55.6</b>	<b>18</b>	<b>30.0</b>	<b>28.7</b>
<b>Unknown</b>	<b>1</b>	<b>3.1</b>	<b>4</b>	<b>8.0</b>	<b>3</b>	<b>6.7</b>	<b>3</b>	<b>6.7</b>	<b>4</b>	<b>6.7</b>	<b>17.4</b>
<b>TOTAL</b>	<b>32</b>	<b>100.0</b>	<b>50</b>	<b>100.0</b>	<b>52</b>	<b>100.0</b>	<b>45</b>	<b>100.0</b>	<b>60</b>	<b>100.0</b>	<b>100.0</b>

Total Yr 11 February enrolment

181

194

175

223

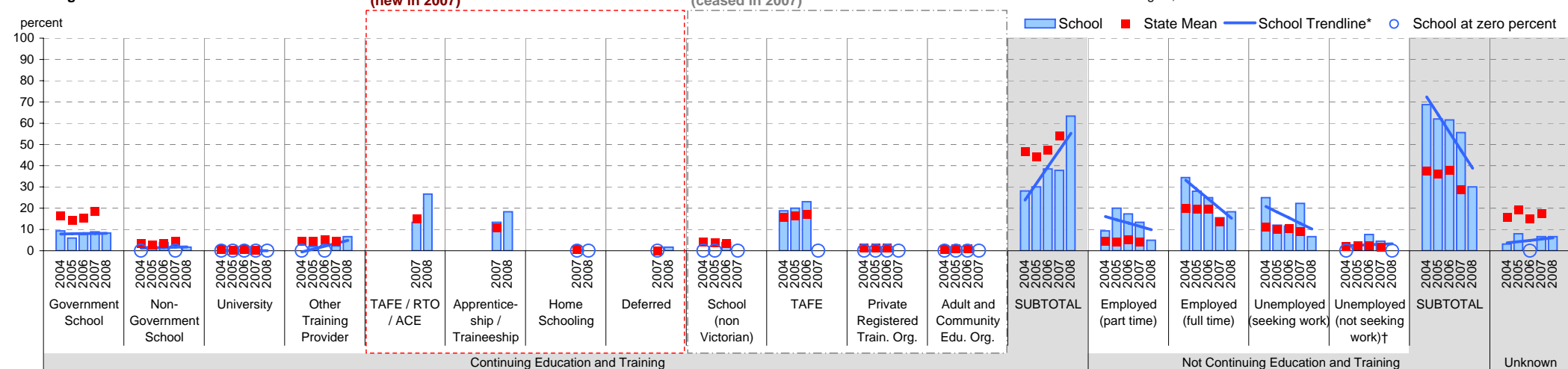
208

Notes: \* The school trendline is being trialled. It is only plotted when there is data for each calendar year.

† Includes deceased students.

^ 2008 benchmarks will be calculated in August, when data from all schools has been submitted.

## School against State



# Exit Destination: Students who left Year 12 before completing the year

School no: 8350

School name: Sunbury College

Explanation: The destination of students who left prior to completing Year 12.

Source of data: Data retrieved electronically from CASES21 following February census.

Exit Destination	2004		2005		2006		2007		2008		2007 state^
	n	%	n	%	n	%	n	%	n	%	%
<b>Continuing education and training</b>											
Government School									1	11.1	10.2
Non-Government School											1.8
University					1	33.3			1	11.1	1.1
Other Training Provider									1	11.1	3.5
TAFE / RTO / ACE							1	20.0			14.7
Apprenticeship / Traineeship									1	11.1	7.5
Home Schooling											
Deferred											0.1
<b>(ceased in 2007)</b>											
School (non Victorian)											
TAFE											
Private Registered Training Organisation											
Adult and Community Education Organisation											
<b>SUBTOTAL</b>					1	33.3	1	20.0	3	33.3	39.0
<b>Not continuing education and training</b>											
Employed (part time)	1	14.3	1	16.7			1	20.0			6.0
Employed (full time)	3	42.9	4	66.7			1	20.0	4	44.4	21.6
Unemployed (seeking work)	2	28.6	1	16.7	2	66.7	2	40.0	1	11.1	12.8
Unemployed (not seeking work)†											2.9
<b>SUBTOTAL</b>	6	85.7	6	100.0	2	66.7	4	80.0	5	55.6	43.2
<b>Unknown</b>	1	14.3							1	11.1	17.8
<b>TOTAL</b>	7	100.0	6	100.0	3	100.0	5	100.0	9	100.0	100.0

Total Yr 12 February enrolment

158

156

147

131

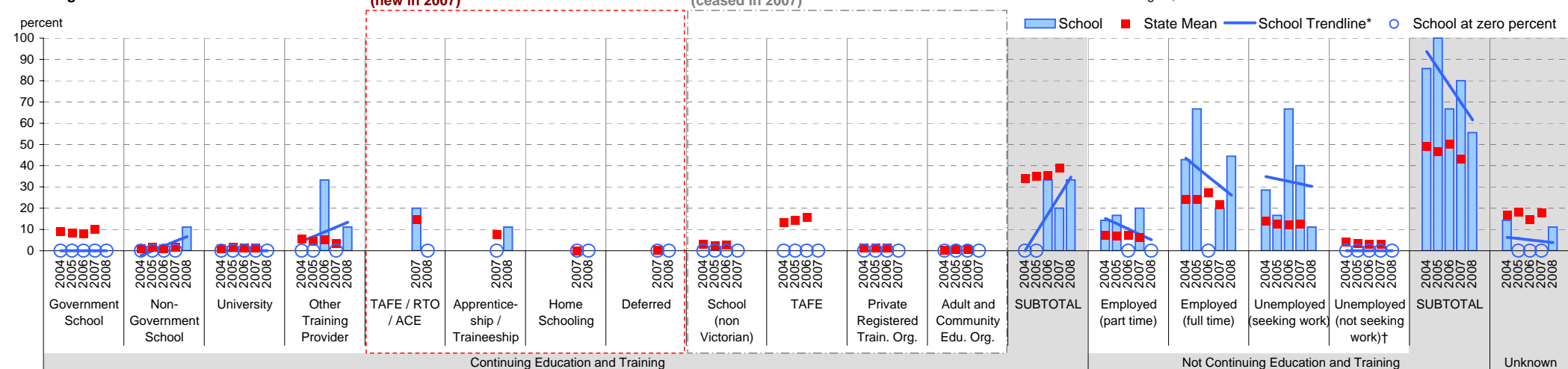
185

Notes: \* The school trendline is being trialled. It is only plotted when there is data for each calendar year.

† Includes deceased students.

^ 2008 benchmarks will be calculated in August, when data from all schools has been submitted.

## School against State



# Exit Destination: Students who left at the end of Year 12

School no: 8350

School name: Sunbury College

Explanation: The destination of students who left at the end of Year 12.

Source of data: Data retrieved electronically from CASES21 following February census.

Exit Destination	2004		2005		2006		2007		2008		2007 state^
	n	%	n	%	n	%	n	%	n	%	%
<b>Continuing education and training</b>											
Government School					1	0.7					1.2
Non-Government School									1	0.6	0.3
University	39	25.8	43	28.3	50	34.5	39	30.7	61	34.5	36.6
Other Training Provider					1	0.7			10	5.6	2.7
<b>TAFE / RTO / ACE</b>											
Apprenticeship / Traineeship							11	8.7	13	7.3	5.6
Home Schooling											0.0
Deferred							4	3.1	5	2.8	4.1
<b>(ceased in 2007)</b>											
School (non Victorian)											
TAFE	48	31.8	44	28.9	39	26.9					
Private Registered Training Organisation											
Adult and Community Education Organisation											
<b>SUBTOTAL</b>	<b>87</b>	<b>57.6</b>	<b>87</b>	<b>57.2</b>	<b>91</b>	<b>62.8</b>	<b>87</b>	<b>68.5</b>	<b>123</b>	<b>69.5</b>	<b>73.2</b>
<b>Not continuing education and training</b>											
Employed (part time)	23	15.2	32	21.1	20	13.8	2	1.6	18	10.2	5.5
Employed (full time)	21	13.9	21	13.8	24	16.6	26	20.5	21	11.9	10.5
Unemployed (seeking work)	16	10.6	7	4.6	5	3.4	11	8.7	13	7.3	4.4
Unemployed (not seeking work)†	1	0.7	2	1.3	5	3.4	1	0.8	1	0.6	0.7
<b>SUBTOTAL</b>	<b>61</b>	<b>40.4</b>	<b>62</b>	<b>40.8</b>	<b>54</b>	<b>37.2</b>	<b>40</b>	<b>31.5</b>	<b>53</b>	<b>29.9</b>	<b>21.1</b>
<b>Unknown</b>	<b>3</b>	<b>2.0</b>	<b>3</b>	<b>2.0</b>	<b>3</b>	<b>2.0</b>	<b>1</b>	<b>0.6</b>	<b>1</b>	<b>0.6</b>	<b>5.7</b>
<b>TOTAL</b>	<b>151</b>	<b>100.0</b>	<b>152</b>	<b>100.0</b>	<b>145</b>	<b>100.0</b>	<b>127</b>	<b>100.0</b>	<b>177</b>	<b>100.0</b>	<b>100.0</b>

Total Yr 12 February enrolment

158

156

147

131

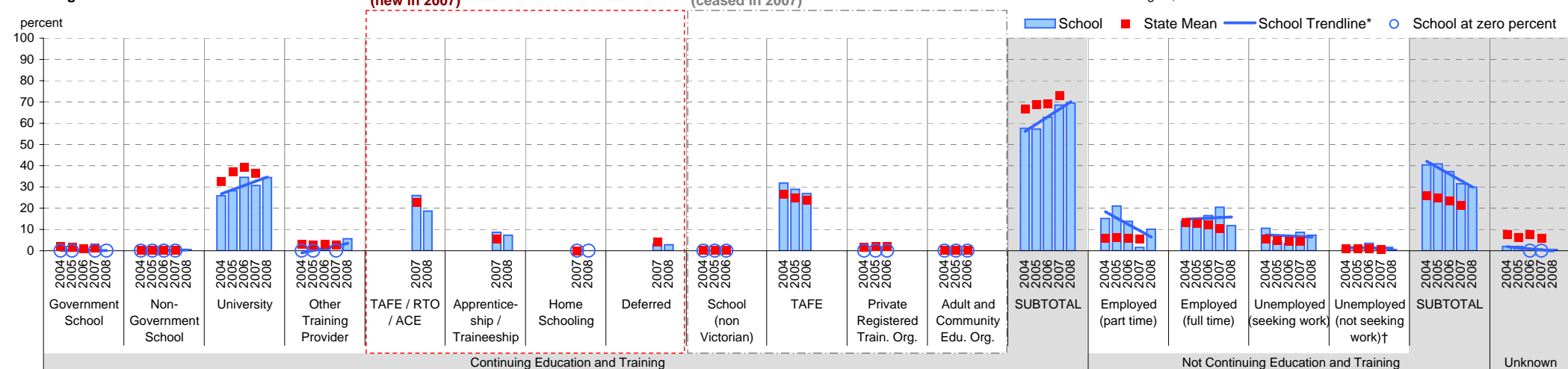
185

Notes: \* The school trendline is being trialled. It is only plotted when there is data for each calendar year.

† Includes deceased students.

^ 2008 benchmarks will be calculated in August, when data from all schools has been submitted.

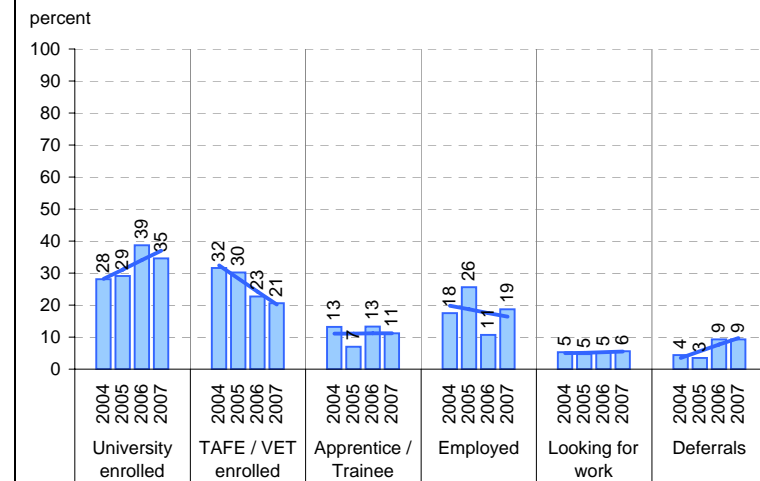
## School against State



## On Track

Source of data: Data received from a telephone survey of Year 12 completers, conducted in April / May of the subsequent year.

### School only



Note: The exit destination data from On Track and CASES21 is not directly comparable for several reasons, one of which is the different bases. CASES21 data is based on all Year 12 completers, whereas On Track is based on Year 12 completers who responded to the survey. Hence the CASES21 data has an "unknown" category and the On Track data does not. Another reason is the slightly different categories for example, CASES21 includes a "home schooling" category.

# Student Absence

School no: 8350

School name: Sunbury College

Source of data: Data retrieved electronically from CASES21.

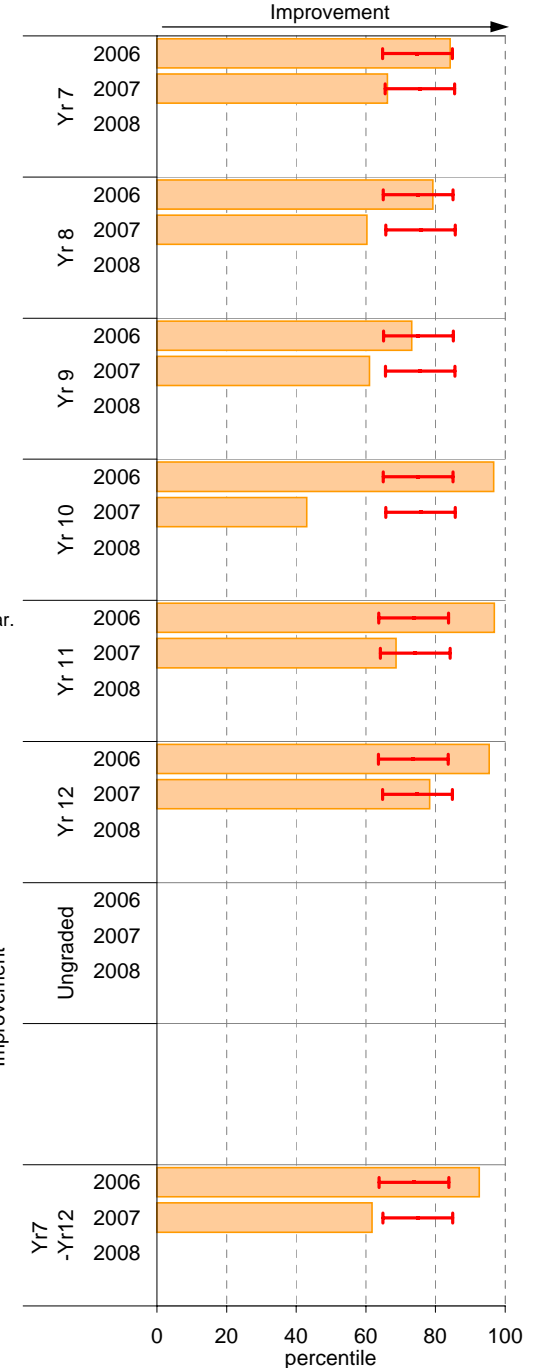
Explanation: The average (mean) number of absent days† per FTE\*\* student.

Note that 20 absent days equates to 1 absent day per fortnight, and 10 absent days to 1 absent day per month.

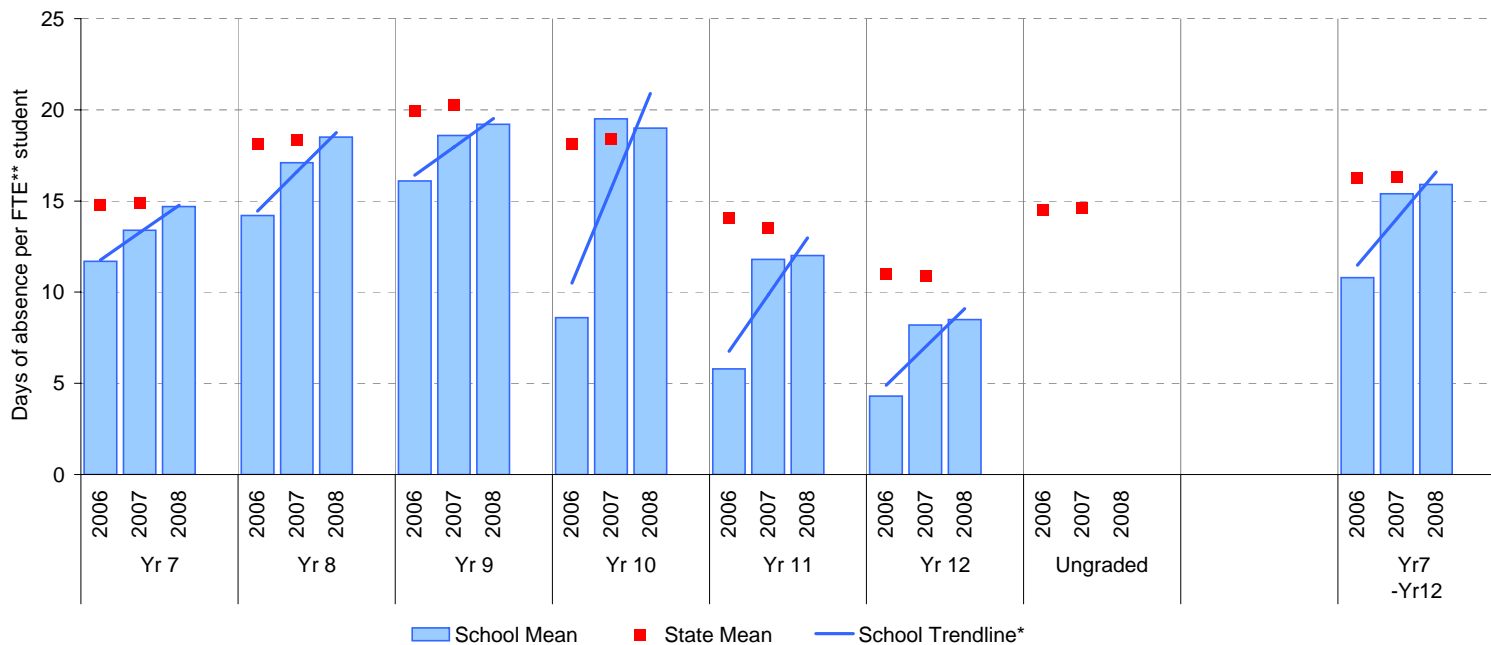
	School						2007 state benchmark^		
	2006		2007		2008		25th ptile	Mean	75th ptile
	Enrolments	Avg absent days / FTE** student	Enrolments	Avg absent days / FTE** student	Enrolments	Avg absent days / FTE** student			
Yr 7	254.0	11.7	262.6	13.4	214.0	14.7	12.6	14.9	18.6
Yr 8	273.0	14.2	246.9	17.1	271.0	18.5	15.1	18.3	22.2
Yr 9	218.0	16.1	274.2	18.6	244.0	19.2	15.9	20.2	24.8
Yr 10	240.0	8.6	219.6	19.5	280.9	19	15.2	18.4	22.8
Yr 11	174.7	5.8	217.5	11.8	207.6	12	10.9	13.5	18.5
Yr 12	146.7	4.3	126.6	8.2	185.4	8.5	8.3	10.9	14.8
Ungraded								14.6	
7-12 mean		10.8		15.4		15.9		16.3	

Notes: † Includes non-curriculum absences only (absence codes 200, 201, 202, 203, 205, 206, 207, 208, 209, 210, 211, 300, 401, 500, 700, 800, 804, 805, 900).  
 \* The school trendline is only plotted when there is data for each calendar year.  
 \*\* FTE = Full Time Equivalent (including part-time and part-year fractions).  
 ^ 2008 benchmarks and percentiles will be calculated in August, when data from all schools has been submitted.

## School Mean as percentile against SFO percentile range^



## School Mean against State Mean^



# Parent Opinion

School no: 8350

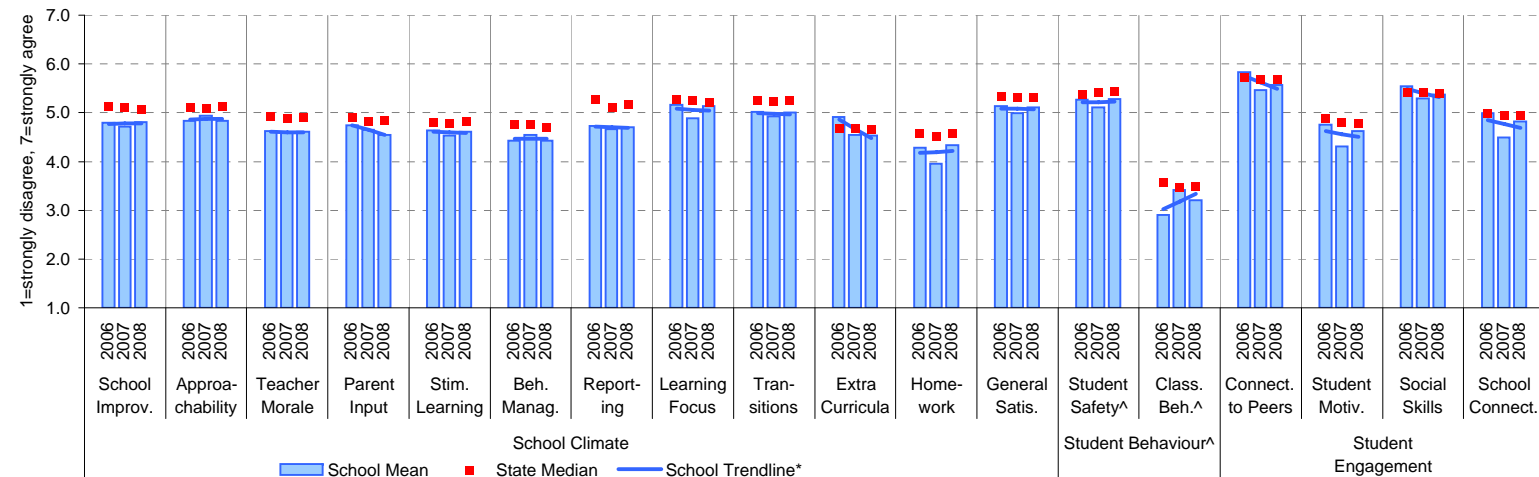
School name: Sunbury College

**Explanation:** A self-completion questionnaire to obtain parents' opinions of the school. Parents rated a number of statements using a scale where 1=strongly disagree & 7=strongly agree. The statements were grouped into the following categories.

**Source of data:** Data scanned from questionnaires completed by parents.

Variable No.	Name	Year	School mean	State Secondary median
1	School Improvement	2006	4.80	5.13
		2007	4.72	5.11
		2008	4.81	5.07
2	Approachability	2006	4.83	5.11
		2007	4.94	5.10
		2008	4.84	5.12
3	Teacher Morale	2006	4.62	4.92
		2007	4.58	4.88
		2008	4.60	4.89
4	Parent Input	2006	4.75	4.89
		2007	4.65	4.83
		2008	4.55	4.84
5	Stimulating Learning	2006	4.64	4.81
		2007	4.53	4.79
		2008	4.61	4.82
6	Behaviour Management	2006	4.43	4.76
		2007	4.54	4.76
		2008	4.42	4.71
7	Reporting	2006	4.73	5.28
		2007	4.67	5.11
		2008	4.70	5.17

## School Mean against Secondary State Mean



Notes: \* The school trendline is plotted when there is data for each calendar year.

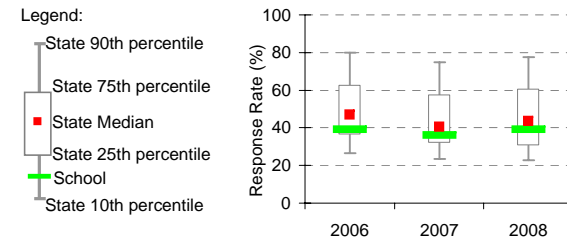
^^ Benchmarks available for Primary, Secondary, Pri/Sec, Special and SDS schools.

\*\* If there were 6 or less respondents, table data is not shown for confidentiality reasons. If there were 3 or less respondents, graph data is not shown for confidentiality reasons.

^ Parents' responses to all negatively phrased questions have been reversed for reporting purposes. Across all variables, the higher the score or percentile rank, the more positive parents' perceptions.

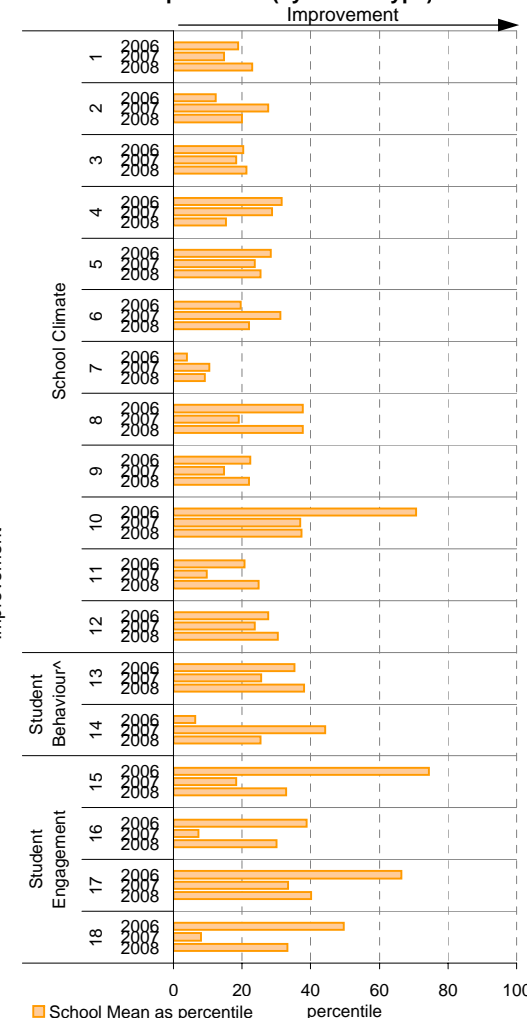
Produced by Data, Outcomes and Evaluation Division, DEECD

## School response rate\*\* against Secondary school distribution



Year	No. of respondents	No. invited	Response Rate
2006	75	191	39.3%
2007	76	210	36.2%
2008	75	191	39.3%

## School Mean as percentile (by school type)



This page last updated: 13/05/2009

# Staff Opinion

School no: 8350

School name: Sunbury College

Explanation: A self-completion questionnaire to obtain the staff's opinions of the school. The survey was administered online using the School Organisational Health Questionnaire.

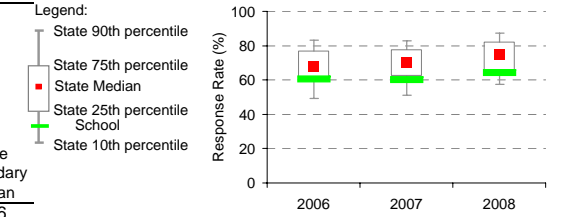
Source of data: Data transmitted from school staff to DEECD via an online survey application.

Variable	No.	Name	Year	School mean	State Secondary median
1 Individual Morale			2006	62.5	64.2
			2007	65.5	63.5
			2008	65.2	65.0
2 School Morale			2006	62.1	60.8
			2007	65.5	60.2
			2008	60.7	62.2
3 Supportive Leadership			2006	70.7	65.0
			2007	72.8	63.8
			2008	64.8	65.8
4 Role Clarity			2006	71.1	68.0
			2007	74.2	67.8
			2008	72.4	69.1
5 Professional Interaction			2006	69.3	68.1
			2007	75.7	68.3
			2008	70.9	70.4
6 Participative Decision-Making			2006	56.5	59.0
			2007	58.1	58.7
			2008	51.9	59.8
7 Goal Congruence			2006	63.5	64.7
			2007	65.7	65.3
			2008	62.5	66.4

Variable	No.	Name	Year	School mean	State Secondary median
8 Appraisal & Recognition			2006	54.0	55.6
			2007	57.0	55.4
			2008	56.0	57.9
9 Professional Growth			2006	63.5	61.2
			2007	66.3	61.6
			2008	66.4	62.7
10 Curriculum Coordination			2006	53.3	57.8
			2007	62.6	57.5
			2008	56.7	58.4
11 Effective Discipline Policy			2006	55.2	58.5
			2007	64.4	59.2
			2008	55.8	59.5
12 Student Orientation			2006	64.5	70.5
			2007	70.1	70.0
			2008	67.7	70.8
13 Student Motivation			2006	45.7	48.9
			2007	51.4	48.1
			2008	50.5	49.0
14 Student Decision-Making			2006	57.2	57.2
			2007	61.1	56.2
			2008	62.2	57.8

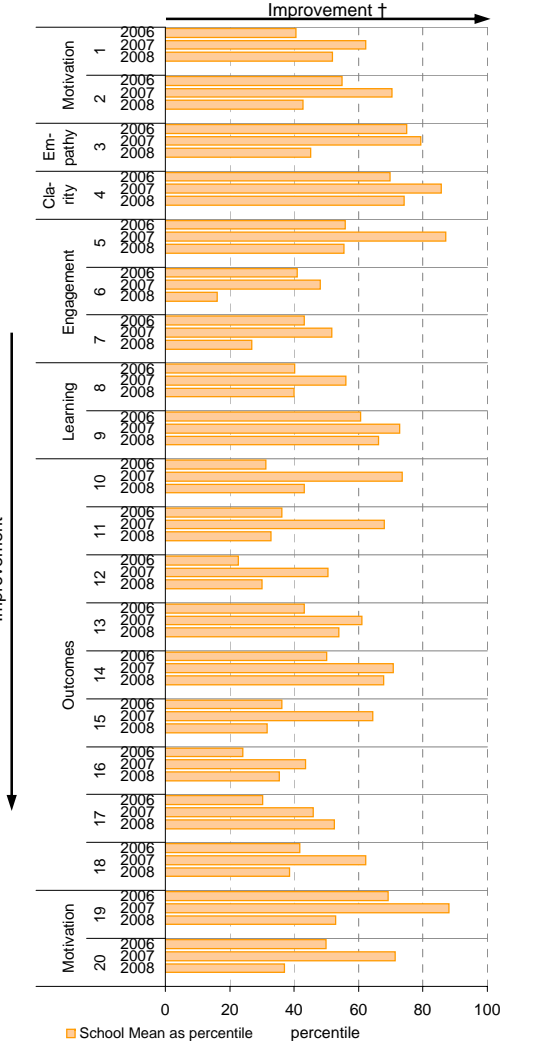
Variable	No.	Name	Year	School mean	State Secondary median
15 Learning Environment			2006	59.3	62.6
			2007	65.1	62.3
			2008	60.7	63.8
16 Student Misbehaviour			2006	59.2	49.3
			2007	52.1	49.9
			2008	54.7	49.6
17 Classroom Misbehaviour			2006	25.0	20.9
			2007	22.9	22.4
			2008	21.0	21.4
18 Excessive Work Demands			2006	62.0	60.4
			2007	58.6	61.4
			2008	62.0	59.4
19 Individual Distress			2006	29.3	32.6
			2007	25.7	33.2
			2008	31.4	31.7
20 School Distress			2006	47.1	47.1
			2007	43.3	48.6
			2008	49.1	46.2

## School response rate\*\* against Secondary school distribution

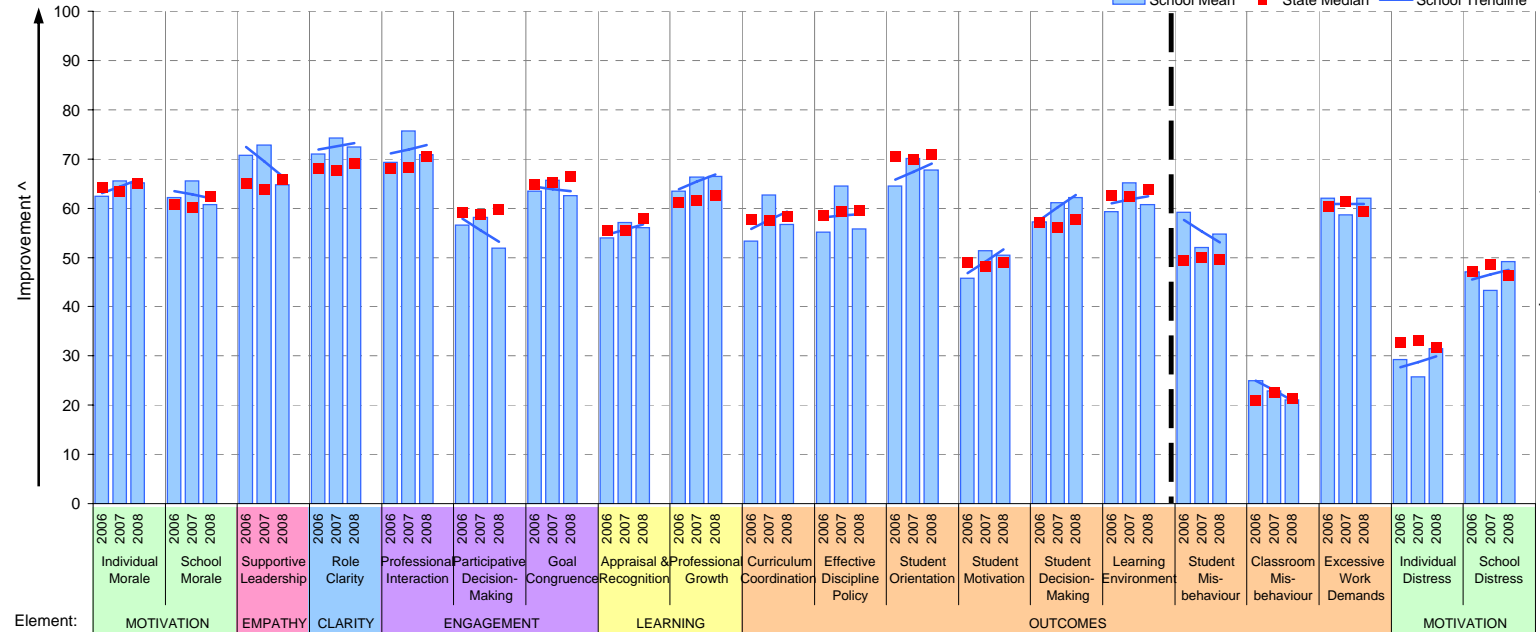


Year	No. of respondents	No. invited	Response Rate
2006	87	144	60%
2007	86	143	60%
2008	95	148	64%

## School Mean as percentile (by school type)



## School Mean against Secondary State Median



Notes: \* The school trendline is being trialled. It is only plotted when there is data for each calendar year.

\*\* If there were 6 or less respondents, table data is not shown for confidentiality reasons. If there were 3 or less respondents, graph data is not shown for confidentiality reasons.

^ The higher the school mean, the more positive the outcome for variables 1 to 15. The lower the school mean, the more positive the outcome for variables 16 to 20.

† The higher the school percentile, the more positive the outcome for all variables.

^^ Benchmarks are available for Primary, Secondary, Pri/Sec, Special & SDS schools.

# Performance & Development Culture (P&DC)<sup>††</sup>

NEW

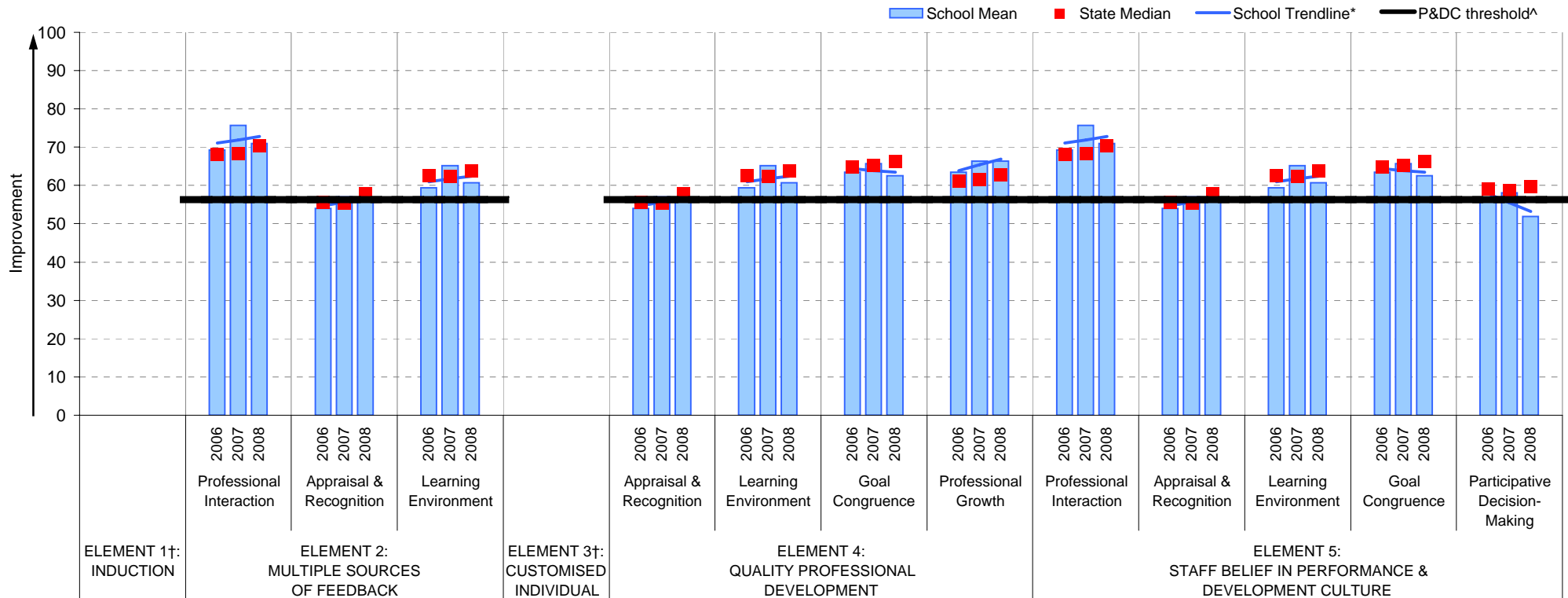
School no: 8350

School name: Sunbury College

Explanation: The data on this page refers to the Staff Opinion Survey.

Source of data: Data transmitted from school staff to DEECD via an online survey application.

## School Mean against Secondary State Median



### Notes:

†† An assessment of the correlation between the P&DC Questionnaire and the Staff Opinion Survey was undertaken using data from Victorian Government schools that completed both surveys 2005 to 2007 (ie. 699 schools). This led to the identification of the components of the Staff Opinion Survey that could be used to assist schools with the ongoing monitoring of their performance and development culture. Refer to the P&DC website for further information: <http://www.education.vic.gov.au/management/schoolimprovement/panddc/default.htm>. For numerical ratings relating to the above graph, refer to the Staff Opinion Survey page in this report.

† Note that there is no significant correlation between the Staff Opinion Survey and P&DC elements 1 (Induction) and 3 (Customised Individual Development Plan).

^ The P&DC threshold was derived from the P&DC Questionnaire 'percent favourable' methodology where a school is considered at the standard of accreditation when their Element score is : favourable (ie. at least 75% of staff selected the top two response categories in the P&DC Questionnaire).

\* The school trendline is only plotted when there is data for each calendar year.

\*\* If there were 3 or less respondents, graph data is not shown for confidentiality reasons.

^^ Benchmarks are available for Primary, Secondary, Pri/Sec, Special & SDS schools.

# Staff Sick Leave

**School no:** 8350

**School name:** Sunbury College

**Explanation:** The number of non-certificated and total sick leave days taken per staff member. A detailed explanation on how staff sick leave is calculated is provided at: [education.vic.gov.au/management/schoolimprovement/performance/performancefaq.htm](http://education.vic.gov.au/management/schoolimprovement/performance/performancefaq.htm).

**Source of data:** Human Resources Management System (HRMS)^.

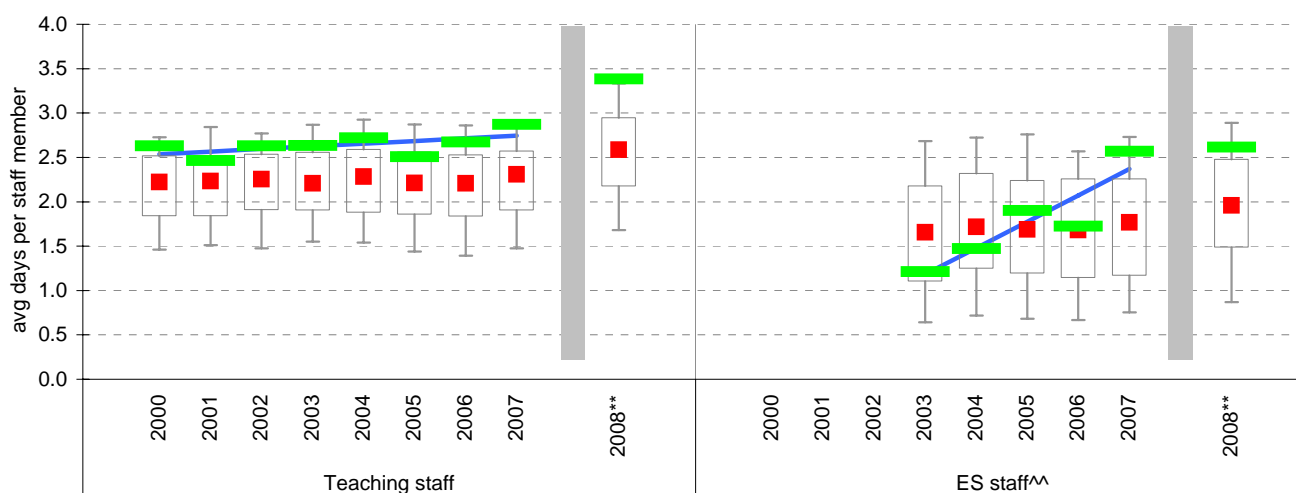
Non-Certificated sick leave days per staff member^

Staff Type	2000	2001	2002	2003	2004	2005	2006	2007	2008**	2008 State Median**
Teacher	2.63	2.46	2.63	2.63	2.72	2.51	2.67	2.87	3.38	2.59
ES^^					1.47	1.90	1.72	2.57	2.62	1.96

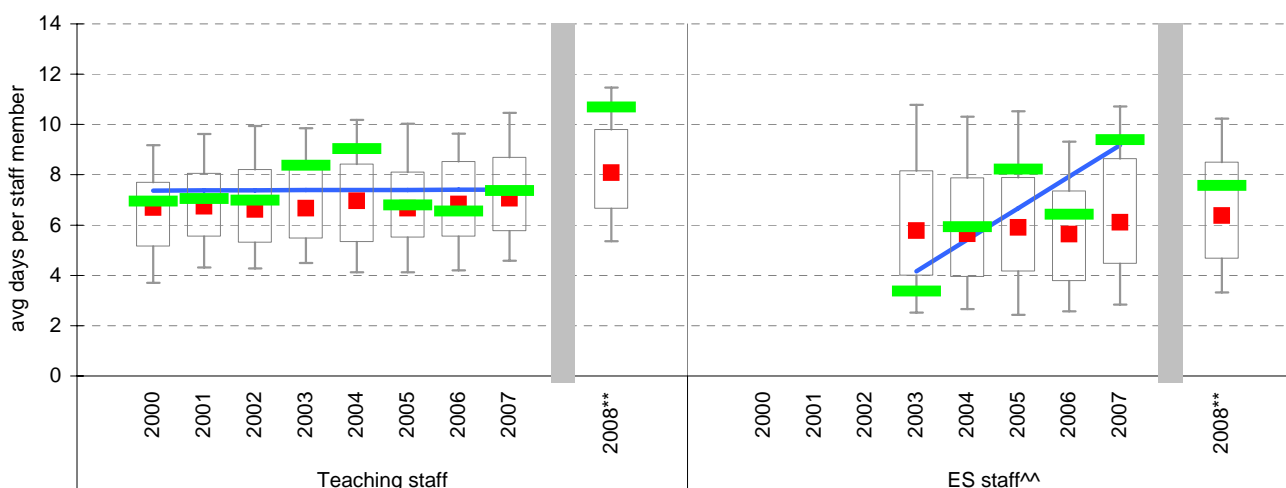
Total sick leave days per staff member^

Staff Type	2000	2001	2002	2003	2004	2005	2006	2007	2008**	2008 State Median**
Teacher	6.95	7.06	6.98	8.38	9.04	6.80	6.55	7.37	10.70	8.09
ES^^					5.93	8.22	6.43	9.39	7.57	6.38

## NON-CERTIFICATED sick leave

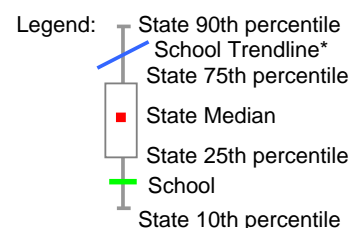


## TOTAL sick leave



### Notes:

- \* The school trendline is only plotted when there is data for each calendar year.
- \*\* The way in which sick leave data are calculated changed in 2008. As such, data from 2008 cannot be compared with previous years.
- ^ There may be some discrepancy between the results from CASES21 and those from HRMS. The latter are considered to be more accurate.
- ^^ Data for ES (Education Support) staff is only available from 2003. In previous versions of this report, ES staff were known as SSO staff.



# Teaching Staff Retention

**School no:** 8350

**School name:** Sunbury College

**Explanation:** The retention rate of teaching staff is determined by matching staff payroll records for the last pay in June of one year (Year A), to the last pay in June of the following year (Year B).

**Source of data:** Human Resources Management System (HRMS).

## Teaching Staff\*

Year A	Year B	Number of Teaching Staff in Year A	Number of Teaching Staff retained in Year B	Teaching Staff Retention Rate	Statewide Average
2005	2006	114	101	89%	87%
2006	2007	118	100	85%	86%
2007	2008	117	101	86%	84%

Of the 114 teaching service staff at June 2005 (including those on leave without pay), 101 or 89% were still at the school at June 2006. This figure across all Government schools was 87%.

Of the 118 teaching service staff at June 2006 (including those on leave without pay), 100 or 85% were still at the school at June 2007. This figure across all Government schools was 86%.

Of the 117 teaching service staff at June 2007 (including those on leave without pay), 101 or 86% were still at the school at June 2008. This figure across all Government schools was 84%.

## Ongoing Teaching Staff\*\*^

Year A	Year B	Number of Ongoing Teaching Staff in Year A	Number of Ongoing Teaching Staff retained in Year B	Ongoing Teaching Staff Retention Rate	Statewide Average
2005	2006	98	92	94%	91%
2006	2007	96	86	90%	90%
2007	2008	100	91	91%	88%

Of the 98 ongoing teaching service staff at June 2005 (including those on leave without pay), 92 or 94% were still at the school at June 2006. This figure across all Government schools was 91%.

Of the 96 ongoing teaching service staff at June 2006 (including those on leave without pay), 86 or 90% were still at the school at June 2007. This figure across all Government schools was 90%.

Of the 100 ongoing teaching service staff at June 2007 (including those on leave without pay), 91 or 91% were still at the school at June 2008. This figure across all Government schools was 88%.

Notes: \* Teaching staff includes Principal class, Teacher class and Instructor class. Teaching staff employed as visiting teachers, guidance officers, curriculum consultants, etc. are excluded as they are not charged to a particular school.

^ Not including fixed term staff, except for where staff had changed from ongoing in Year A to fixed term in Year B.

# Bank Balances

**School no:** 8350

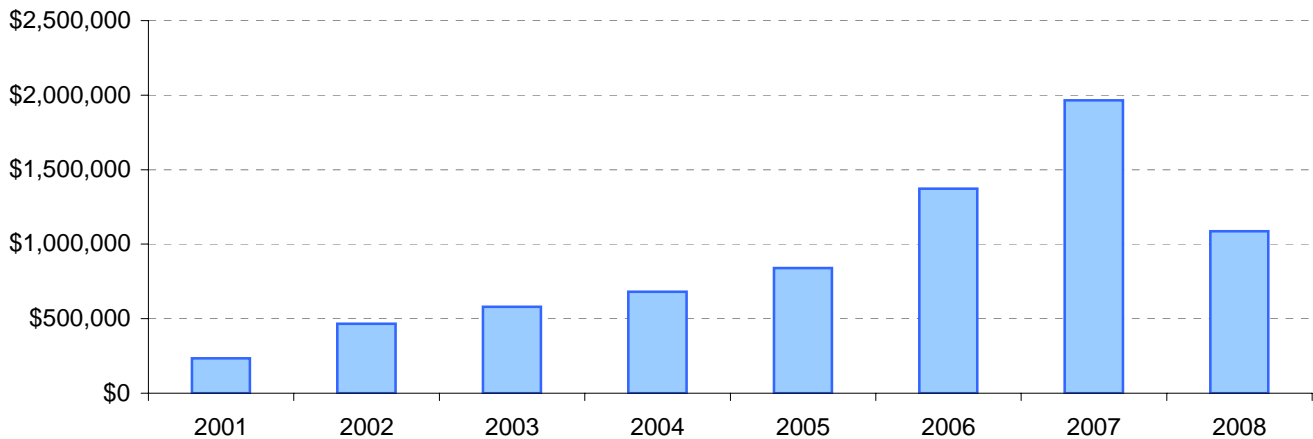
**School name:** Sunbury College

**Explanation:** Account balance figures include official and investment accounts, and are calculated by taking the opening balance at 1st January plus the total receipts at 31st December less total payments at 31st December.

## Account Balances (Official plus Investment Accounts)

2001	\$234,074	2005	\$840,675
2002	\$465,717	2006	\$1,371,986
2003	\$580,234	2007	\$1,965,008
2004	\$679,891	2008	\$1,086,962

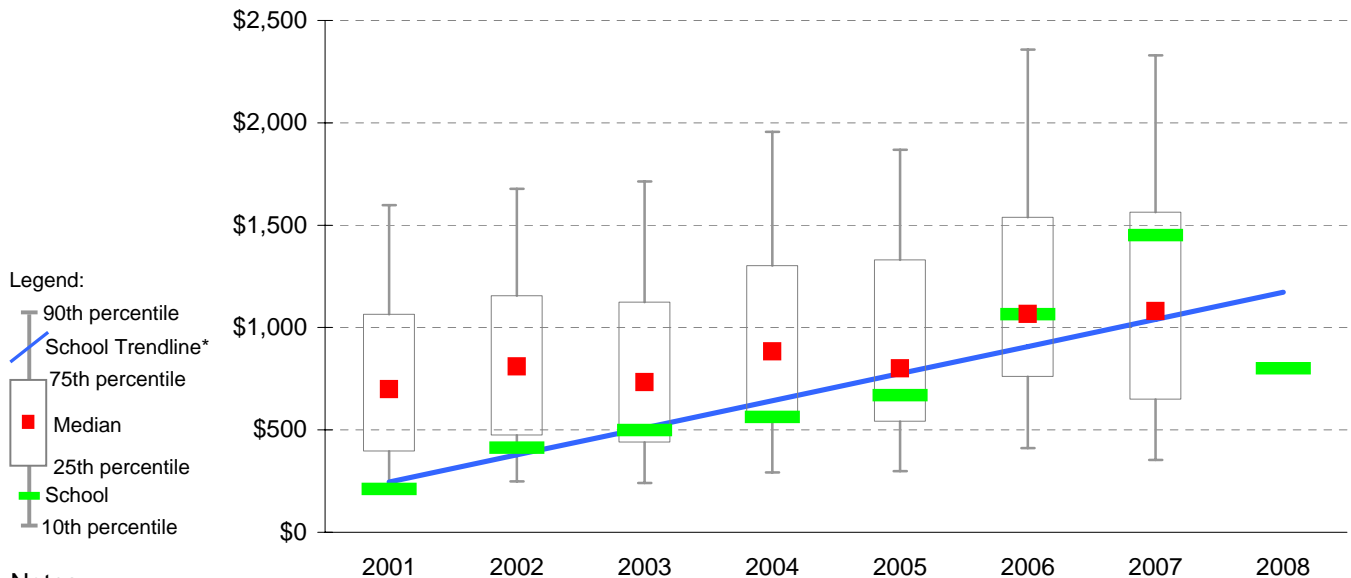
### Account Balances



## Account Balances (Official plus Investment Accounts) per student<sup>†</sup>

2001	\$211	2005	\$669
2002	\$413	2006	\$1,065
2003	\$499	2007	\$1,450
2004	\$563	2008	\$801

### School account balances per student enrolled in August census plotted on state Secondary benchmarks<sup>^</sup>



#### Notes:

\* The school trendline is being trialled. It is only plotted when there is data for each calendar year.

† The account balance per student has been calculated to enable some comparison to be made between schools.

^ Benchmarks for primary, secondary, pri/sec, SDS, special and language schools.